



**Bulletin**  
June 2026

## JUNE EVENT

**Monthly Meeting:** Monday, June 8, 2026

Mershon Hall at the Atlanta Botanical Garden

Gather at 6:30 p.m; **program starts at 7 p.m. sharp**

### Annual Orchid Conservatory Tour & Ice Cream Social

See flyer below for details

*Bring your blooming plants for our monthly ribbon judging*



**Atlanta Orchid SOCIETY**

*Join Us!*

**ANNUAL ORCHID CONSERVATORY TOUR & Ice Cream Social!**

*Orchids, Friends & Sweet Treats!*

**MONDAY JUNE 8**

**6:30 PM**  
MEET IN MERSHON HALL

**7:00 PM**  
TOUR BEGINS PROMPTLY

**BEHIND-THE-SCENES TOUR**  
LED BY **BECKY BRINKMAN**  
Fuqua Orchid Center Manager

**WE WILL NOT WAIT FOR LATE ARRIVALS.**  
*Please be on time!*

**COMPLETE THE ICE CREAM SURVEY!**  
Pick your primary and secondary flavor choices!

**RENEW YOUR MEMBERSHIP!**  
If your dues are not current, you don't get ice cream!

**BRING YOUR BLOOMING ORCHIDS**  
for Ribbon Judging!

**IN-PERSON ONLY**  
No Zoom this month.

*We can't wait to see you there!*

[www.atlantaorchidsociety.org](http://www.atlantaorchidsociety.org) | [f](#) [i](#) @atlantaorchidsociety

## President's Message

Dear Atlanta Orchid Society Members and Friends,

June is one of our favorite months on the Atlanta Orchid Society calendar because it's time once again for our annual behind-the-scenes tour of the Fuqua Orchid Conservatory at the Atlanta Botanical Garden! This special evening, led by Becky Brinkman, Fuqua Orchid Center Manager, will take place on Monday, June 8, and will be followed by our always-popular Ice Cream Social.

Please note that we will gather earlier than usual this month. We will meet at 6:30 PM in Mershon Hall, and the conservatory tour will begin **promptly at 7 PM**. Because of the logistics involved in moving through the conservatory as a group, we will not be able to delay the start time or wait for late arrivals, so please plan accordingly and arrive on time.

And yes... the ice cream is serious business! Please do not forget to complete the flavor survey that was emailed to members and select both your **primary and secondary** flavor choices. This helps us ensure enough frozen happiness for everyone.

A friendly reminder as well: if your 2026 membership dues are not current, now is the perfect time to renew. Members who have not renewed will unfortunately **not be included in the ice cream order**. We promise this policy is motivated entirely by organizational necessity and not by cruelty involving mint chocolate chip deprivation.

*Continued on p. 3*

## ATLANTA ORCHID SOCIETY

### 2026 Officers

- President**  
[Firelli Alonso](#)
- Vice-President/Programs**  
[Paul Reavis](#)
- Secretary**  
[Dan Alvear](#)
- Treasurer**  
[Edison Gu](#)
- Immediate Past President**  
[Bailey Santwire](#)

### 2026 Trustees

- [Jon Crate](#)
- [Danny Lentz](#)
- [Nick Rust](#)
- [Steve Schwab](#)
- [Barbara Barnett](#)
- [Véronique Perrot](#)

### Volunteers

- AOS Rep – [Barbara Barnett](#)
- Greengrowers – [Danny Lentz](#)
- Librarian –
- MAOC Rep – [Doug Hartong](#)
- Meeting Hospitality – [Dan Alvear](#)
- Membership – [Steve Schwab & Dan Alvear](#)
- Silent Auction – [Carson Barnes](#)
- Monthly Ribbon Judging – [Barbara Barnett & Carson Barnes](#)
- Newsletter – [Véronique Perrot & Mark Reinke](#)
- Orchid Digest Rep – [David Mellard](#)
- 2026 Show Chair – [Danny Lentz](#)
- 2026 Show Co-Chair – [Firelli Alonso](#)
- Website – [Danny Lentz](#)
- Social Media – [Firelli Alonso](#)

## The Atlanta Orchid Society Bulletin

Volume 67: Number 6 – June 2026

Newsletter Editors: [Véronique Perrot](#) & [Mark Reinke](#)

The [Atlanta Orchid Society](#) is affiliated with the [American Orchid Society](#), the [Orchid Digest Corporation](#), the [Mid-America Orchid Congress](#), and the [Garden Club of Georgia](#).

## July Panel Discussion on Orchid Culture

Join us for an evening with our panel of experienced growers as we tackle your most pressing orchid questions! Do you have questions about Orchid Culture, Repotting, Media, Water, Nutrition, Pests, Diseases — or anything else orchid-related? This is your chance to ask our panel directly!

Click on this link ([forms.gle/XuriKCecAZZoMb1u7](https://forms.gle/XuriKCecAZZoMb1u7)) or use the QR code below to access the form to submit as many questions as you like. We'll do our best to field them all during the meeting.

**Monday, July 13, 2026**  
**Mershon Hall, Atlanta Botanical Garden**  
**Gather at 7:00 PM**  
**Discussion begins at 7:30 PM**

Don't forget to bring your blooming orchids for Ribbon Judging!



## EVENTS CALENDAR

### June

5 – 7 June – Memphis Orchid Society, Memphis, TN

8 – Atlanta Orchid Society Monthly Meeting: ABG greenhouse tour & ice cream social

13 – AOS monthly judging

### July

11 – AOS monthly judging

13 – Atlanta Orchid Society Monthly Meeting: Panel discussion on orchid culture (see above to submit your questions to the panel)

### August

8 – AOS monthly judging

10 – Atlanta Orchid Society Monthly Meeting: Julian Banbury on botanical latin, at the Gardenhouse Workshop

### September

12 – AOS monthly judging

14 – Atlanta Orchid Society Monthly Meeting: Nick Rust on terrestrial orchids

10 September – Alabama Orchid Society (Birmingham), Carson Barnes, Show Judging Chair

### November

7 – AtIOS yearly auction; Mark Reinke, auctioneer

## President's Message

*Continued from page 1*

Since we do not have a formal speaker this month, there will be **no Zoom option** for the June meeting. This is an **in-person-only event**, and we hope to see a wonderful turnout. As always, don't forget to bring your **blooming orchids for Ribbon Judging** — June blooms can be spectacular, and we love seeing what everyone is growing successfully this time of year.

Looking ahead, please mark your calendars for our **July 13 meeting**, again at ABG's Mershon Hall. We will host an **interactive orchid culture panel discussion** featuring several of our society's experienced growers and judges. This will be your opportunity to ask questions about **orchid cultivation, watering, fertilizing, pest management, reblooming stubborn orchids, mounting techniques, repotting strategies, and much more**. Whether you are a beginner or an experienced grower, these practical discussions are always informative, lively, and fun.

### June Orchid Culture Tips

- With summer heat arriving in earnest across Georgia, June is a month of **active orchid growth**. Many orchids, especially **Cattleyas, Vandas, Dendrobiums, and Oncidium alliance plants**, are producing fresh roots and new growths right now. This makes June an excellent time for repotting many orchids, provided new roots are emerging.
- As temperatures rise, monitor watering carefully. Orchids dry out much faster in warm weather, particularly mounted plants and those growing outdoors under shade cloth. Increase humidity and air movement whenever possible, but avoid allowing plants to remain constantly wet overnight, which can encourage bacterial and fungal problems.

- Continue fertilizing regularly during active growth, but remember that **"weekly, weakly"** still applies. Watch closely for early signs of pests such as **spider mites, scale, and mealybugs**, which become more active during warmer months. Finally, provide adequate shading as the summer sun intensifies — even orchids that enjoy bright light can suffer leaf burn during sudden heat waves.

I look forward to seeing everyone on June 8 for a wonderful evening of orchids, fellowship, and ice cream!

Warm regards,

**Firelli "Fi" Alonso**  
President, Atlanta Orchid Society

---

## A Note from the Editor

**The next issue of the AtIOS newsletter will be a double issue, covering July and August. If there is information you want to see in the newsletter for an event in August, send it to me by the beginning of July.**

**The ribbon judging notes for the July meeting will appear in the September issue, along with the August ribbon judging notes.**

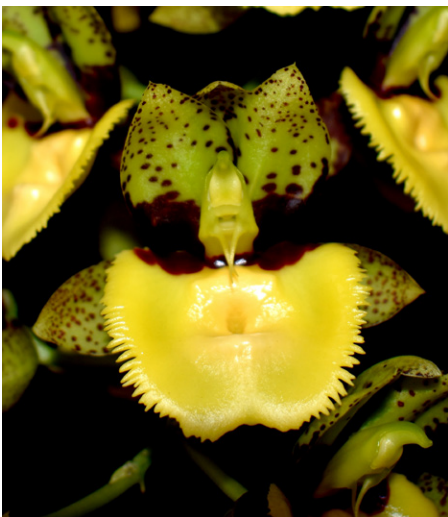
**Véronique**

## Judges' Corner: Judging Summary of the Atlanta Judging Center, 9 May 2026

Monthly judging 9 May 2026, for the Atlanta Judging Center had twelve accredited judges: Firelli Alonso, Carson Barnes, Barbara Barnett, HB Blythe-Hart, Andy Braun, Doug Hartong, Lowell Jacks (Emeritus), David Janvrin, Randy Johnson, David Mellard, Charles Wilson, Susan Wilson, and Associate judge Jon Crate, enabling four judging teams along with two student judges: Scott Elliott, Ben Overlie, and guests Sue Hill and Joe Sayer.

There were 12 entries (all judged) and the two following awards were made:

*Catasetum* (unregistered hybrid – to be completed prior to confirmation of award with AOS) (Diana's Dots x Valerio Padilla) 'Maneki Hill' AM 85 pts, exhibited by Scott Elliott and Sue Hill.



*Catasetum* (Diana's Dots x Valerio Padilla) 'Maneki Hill' AM/AOS



*Lycaste* Lemon Twist 'Maneki Hill' AM/AOS

*Lycaste* Lemon Twist 'Maneki Hill'  
AM 82 pts, exhibited by Scott Elliott and  
Sue Hill:

The following shows have been approved by AOS for 2026 for our affiliated societies:

6 June 2026 – Memphis Orchid Society, Carson Barnes, Show Judging Chair

19 Sept 2026 – Alabama Orchid Society (Birmingham), Carson Barnes, Show Judging Chair



Please join us (whether or not you bring an orchid for judging) at our next monthly center judging, 13 June 2026 at Oglethorpe Presbyterian Church, 3016 Lanier Drive NE, Atlanta. Judging education starts at noon (open to all; June's program will be a discussion on ethics in judging led by David Mellard) with judging now starting at 1 p.m. Free and convenient parking.

Best regards,

Charles Wilson, Chair  
Atlanta Judging Center

# Atlanta Orchid Society Monthly Meeting Ribbon Winners for May, 2026

Notes by Mark Reinke; photos by Jennifer Schwab and Jon Crate



*Cattleya purpurata forma striata*

## Class 1: Cattleya Alliance

### Blue: *Cattleya purpurata forma striata* – Bailey Santwire

*Cattleya purpurata* is a beautiful Brazilian species that comes with a myriad of color variations. Its large 6- to 8-inch flowers are borne as many as five (or more) to the stem on well-grown plants. The buds emerge quickly from long sheaths in May or June in the northern hemisphere and last several weeks. The striata form normally has a purple lip with yellow throat and purple veins running through the white petals. In Brazil, as many as 150 different color variations are recognized and entire orchid societies are dedicated to growing this one species. Such popularity has led to a decline in wild populations, but it can still be abundant in areas that are difficult to access. It is a coastal species, occurring from just south of Rio de Janeiro

and continuing in a narrow strip for about 750 miles further south to beyond the city of Porto Alegre where it lives in swampy areas, in large old trees, and even directly on scrubby bluffs and cliffs facing the sea. This habitat receives rainfall year-round so while drainage should always be excellent and plants should dry quickly after watering they should not be given a dry winter rest like some of the inland species. Otherwise, it is one of the easiest of the large-flowered species to grow provided you can accommodate its robust size.

**Red: *Rhyncattleanthe Exotic Southern Charm* ‘#15’ – Jon Crate & Firelli Alonso**

**White: *Meiracyllium trinasutum* – Danny Lentz & Dianne Morgan**

## Class 2: Cymbidium Alliance

**Red: *Cymbidium* sp. – Vinh Nguyen**



*Rhyncattleanthe Exotic Southern Charm* ‘#15’



*Meiracyllium trinasutum*



*Dendrobium devonianum*

### Class 3: Dendrobium Alliance

#### Blue: *Dendrobium devonianum* – Vinh Nguyen

This species is easily one of the most beautiful of the seasonally deciduous types, but also one of the more challeng-

ing to keep happy and healthy for more than a few years. Vinh has done an amazing job with his plant. The stunning flowers have an almost hand-painted feel, with neatly placed purple tips on a white background and a large, rounded lip with a fringed border and two large yolk yellow “eye” spots. Peak flowering period



is April to June, and the flowers are longer lasting than many of the deciduous species. Plants produce very slender, sometimes branching stems that grow pendent under their own weight. During the growing season they need frequent, almost daily watering to keep up with the needs of the developing growth, followed by a rest period in fall and winter when they should dry between each watering, but not remain dry for extended periods. The natural habitat is in the mountainous regions of southeast Asia and plants do not do well in high heat. They also need cool to chilly nights during the rest period to initiate good flowering. Grow in the smallest pot or basket possible to accommodate the small, fine root system.

**Red: *Dendrobium parishii* – Paul Reavis**

**White: *Dendrobium finisterrae* – Bailey Santwire**



*Dendrobium parishii*



*Epicyclia* Mabel Kanda

#### **Class 4: Epidendrum Alliance**

##### **Blue: *Epicyclia* Mabel Kanda – Cary Green**

*Epicyclia* Mabel Kanda is a cross between *Encyclia cordigera* and *Epidendrum paniculatum* originally registered in 1959 by a grower on the island of Maui. A nice batch of it came through the commercial pipeline about a decade ago but I hadn't seen one in quite a while. The highlight of this orchid is the ability to make large, branched panicles of flowers with nice color and fragrance. Typically, the segments are olive green, while the white lip with prominent side lobes is suffused with purple. The average number of blooms per inflorescence of the awarded examples was forty-two and one plant awarded at Redlands in 2015 carried more than 300 flowers at once. I couldn't find any plants of this orchid currently available for sale, but if you are lucky enough to acquire one, grow it in bright light in a very well-draining mix in a pot or basket. Allow it to dry between each watering and fertilize when actively growing.

**Red: *Encyclia Borincana* – Paul Reavis**

**White: *Encyclia parkinsonianum* – Vinh Nguyen**

### **Become an AOS Judge**

#### **The American Orchid Society Judging Program**

is seeking highly motivated orchid enthusiasts to join the judging ranks

*Work with other like-minded people in support of AOS awards programs and educational efforts*

*For more information contact us at [judges@aos.org](mailto:judges@aos.org)*





*Miltoniopsis* Andrea West

## Class 5: Oncidium Alliance

### Blue: *Miltoniopsis* Andrea West – Firelli Alonso & Jon Crate

*Miltoniopsis* Andrea West was one of the first widely available hybrids featuring a yellow base color, although five generations preceded it before we get back to the species with the yellow variant, *Mps. roezlii* var. *xanthina*. In the last decade quite a few more yellow hybrids have become available, though none descend from this cross. To grow beautiful “Pansy Orchids” like this one, there are two important factors to consider. First is that they prefer to never dry out completely, even for short periods. In the wild, their rather fine roots are protected by mosses and other epiphytic plants on limbs of rainforest trees. How that is accomplished under your growing conditions is a matter of trial and error. I obtain plants grown in a medium grade bark mix that drains quickly. I water up to 3 times per week in dry weather, but

the root system stays healthy for a longer period than in finer mixes. If you get a plant in sphagnum, watering can be a bit trickier. The moss should go almost dry between watering, but then a really good soaking will be needed each time to rewet it thoroughly. Shifting to a net pot in sphagnum could make for a happier plant, as air can get to the roots and the moss can be kept wetter. The second consideration is that *Miltoniopsis* generally do not thrive in temperatures that exceed 85F and would be happiest kept cooler than that. But if you can meet their needs, these orchids put on a show of large, highly fragrant flowers more than once per year.





*Miltonopsis* Rene Komoda

**Red: *Miltoniopsis* Rene Komoda – Firelli Alonso & Jon Crate**

**White: *Brasidosteale* Gilded Tower – Jon Crate & Firelli Alonso**



*Brasidosteale* Gilded Tower



*Paphiopedilum* Ho Chi Minh

## Class 6: Slipper Alliance

**Blue:** *Paphiopedilum* Ho Chi Minh – Cary Green

The registered name of this orchid hints at the fact that it is a cross between two Vietnamese species, *Paph. delenatii* and *Paph. vietnamense*, both members of the Parvisepalum group. The former is found in the mountains of both north and southern parts of the country, while the latter is restricted to small areas in the north near the Chinese border and is rare or possibly extinct in the wild. The resulting cross has garnered several dozen awards since its introduction in 2002. It can bear one or two light to dark pink blooms per inflorescence over striking mottled foliage backed with purple. While adaptable to household temperatures, they are exposed to cool or even chilly nights in winter in their natural habitats. Watering in winter should be less frequent and can be accompanied by occasional morning mistings to keep the plants from becoming totally dry.

**Red:** *Paphiopedilum wellesleyanum forma album x delenatii forma album* – Cary Green

**White:** *Phragmipedium Saint Ouen* – Danny Lentz & Dianne Morgan



**Orchid  
Digest**

When you're serious about orchids.

## JOIN THE ORCHID DIGEST CORPORATION

Don't let the name fool you, the Orchid Digest is a non-profit membership-based organization dedicated to orchids. Designed to appeal to the mid-range to advanced grower, nothing beats the Orchid Digest. For just \$39/year you get 4 issues of full-color, in-depth articles about orchids. The magazine is large format and the fourth issue of the year is always an extra-special edition devoted to a single genus. For membership application forms contact David Mellard (404-237-1694) or visit [www.orchiddigest.com](http://www.orchiddigest.com) to join online.

Have you ever considered becoming an  
American Orchid Society Judge?

We invite you to  
come learn with us

[judges@aos.org](mailto:judges@aos.org)





*Phalaenopsis* KS Super Zebra

## Class 7: Phalaenopsis

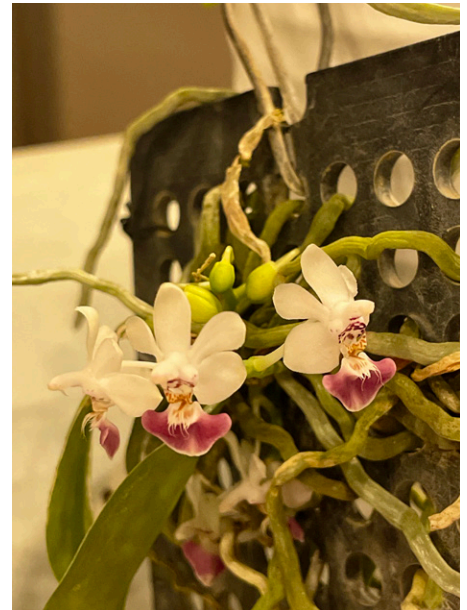
### Blue: *Phalaenopsis* KS Super Zebra – Danny Lentz & Dianne Morgan

This offering from King Sir Orchids of Taiwan was introduced in 2014. It mixes six species, all from the group that prefer heat and high humidity and bear persistent inflorescences which produce several new flowers from their apex each year. The three with the greatest influence in this colorful flower are *Phal. amboinensis*, *Phal. tetraspis*, and *Phal. violacea*. This particular plant produces flowers virtually identical to the “Yuan Shen” clone with bold purple bars and splotches arranged in a random concentric pattern over its segments and a somewhat cupped shape. The grex has received at least six flower quality awards from the American Orchid Society. There are at least 86 first generation registered offspring of *Phal.* KS Super Zebra, all but four were registered by Taiwanese growers. Grow this type of *Phalaenopsis* in a plastic pot with a moisture retentive, but well-draining medium, allowing it to dry slightly between each watering. Maintain

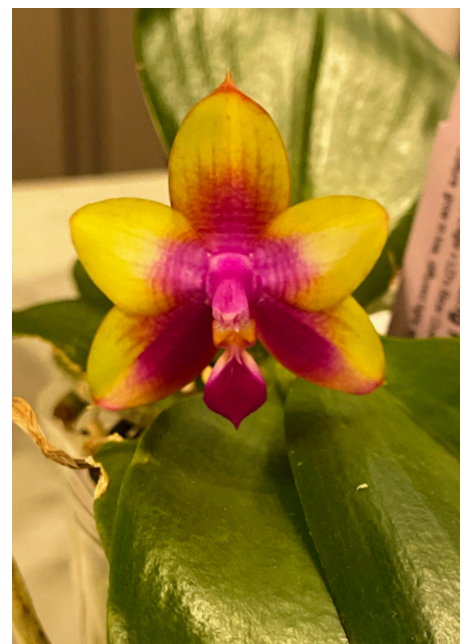
warmth, good humidity and filtered or medium light levels year-round.

### Red: *Phalaenopsis parishii* – Cary Green

### White: *Phalaenopsis* Chienlung Happy Queen – Danny Lentz & Dianne Morgan



*Phalaenopsis parishii*



*Phalaenopsis* Chienlung Happy Queen



*Vanda falcata* cv. Amami

## Class 8: Vandaceous Alliance

### Blue: *Vanda falcata* cv. Amami – Jon Crate & Firelli Alonso

The “Amami” form of *V. falcata* is named after the island in Japan where it grows wild. It is distinguished as a more robust plant with larger foliage and flowers than most examples of the species. The white flowers with a prominent arching nectary are highly fragrant, especially in the evening. May is the beginning of the flowering season which peaks in June and July and trails off to about October. Various growers have success with different methods of caring for this species, but all are based on providing good moisture to the roots, especially in summer, followed by fairly quick drying. In a controlled environment, plants can be mounted on cork with a pad of sphagnum at the base or grown in a small pot or basket with an open medium that allows air to get to the roots. In winter, *V. falcata* benefits from cooler temperatures at least in the 50s Fahrenheit at night and brighter light levels to help prepare the

plant for good flowering the next summer. Wild plants sometimes experience temperatures that are near or slightly below freezing. While they should not be allowed to get too dry, less watering is needed during this cooler period. Small, neat growing plants that produce many fragrant flowers are traits that appeal to many orchid lovers and about 300 registered crosses descend from *V. falcata*.

### Red: *Renanthera citrina* – Vinh Nguyen



*Renanthera citrina*

*Lepanthes telipogoniflora*

## Class 9: Miscellaneous

### Blue: *Lepanthes telipogoniflora* – Tim Cape

This micro-mini species from the Pacific facing slopes of the western fork of the Andes in Colombia is not for the casual grower, requiring constant moisture and high humidity while at the same time avoiding stale conditions around the roots. This is best accomplished by mounting the plants with a pad of sphagnum but also means frequent attention to watering, up to several times per day in hot weather. Some growers have had success in small, undersized pots with an open, fast-draining medium, but this method only reduced the frequency of watering slightly. The comparatively large flowers are usually burnt orange with overlapping sepals and petals that create a rounded saucer shape.

### Blue: *Bulbophyllum dayanum* – Nick Rust

This compact species from the mountains of southeast Asia can produce small clusters of fuzzy flowers with a brooding character at almost any month of the year. They emerge from the base of the pseudobulb and a short inflorescence

*Bulbophyllum dayanum*

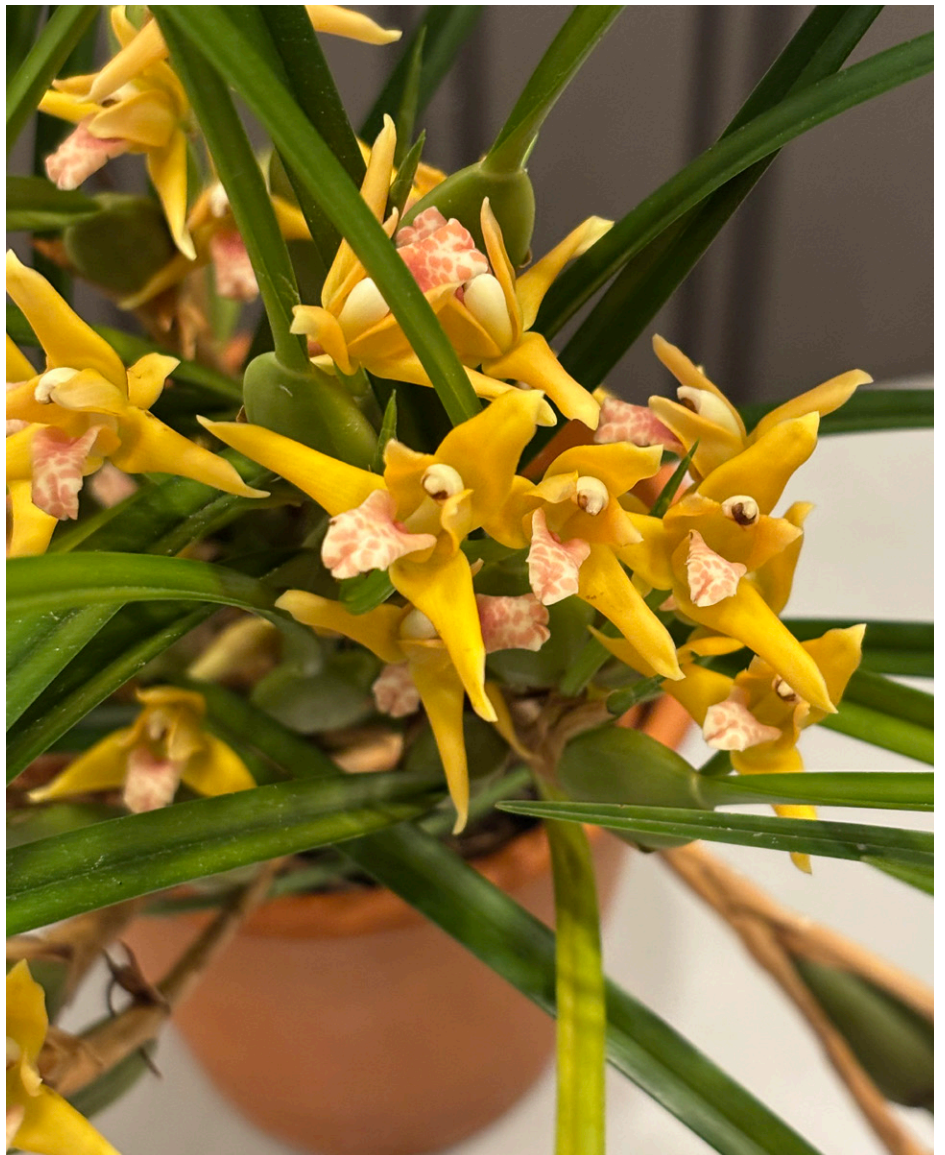
and have a scent appropriate for a fly pollinated species. The creeping habit of the plant is best accommodated in a shallow pot or basket with a long lasting, free draining medium that reduces the need for repotting. Plants can also be grown mounted, though most hobbyists cannot provide an environment with enough humidity to avoid having to water more than once per day in hot weather. The flowers on the plant exhibited hadn't yet fully opened but their unique characteristics were already evident.



*Nervilia plicata*

**Red: *Nervilia plicata* – Nick Rust**

**White: *Maxillaria tenuifolia* ‘Yamada’ AM/  
AOS – Paul Reavis**



*Maxillaria tenuifolia* ‘Yamada’ AM/AOS