



OCTOBER EVENT

Monthly Meeting: Monday, October 13, 2025

Mershon Hall at the Atlanta Botanical Garden

Gather at 7 p.m.; Program starts at 7:30 p.m.

Véronique Perrot on Botany for Orchid Enthusiasts

Bring your blooming plants for our monthly ribbon judging

Véronique Perrot: Botany for Orchid Enthusiasts

Véronique first got interested in orchids while traipsing around the French countryside with her dad, keying out plants and looking at birds. They came across some of the coolest Old World terrestrial orchids, namely the Bee Orchids (*Ophrys* sp.). They also went to the yearly Paris orchid show, which in the late 70s and early 80s would have fitted comfortably in Day Hall. Véronique studied agronomy as an undergraduate, and evolutionary biology in graduate school. She moved to Atlanta 30+ years ago to join the Biology Department at Emory to study the evolution of antibiotic resistance. Now retired from academia, she is a full-time weaver.

Véronique started growing orchids about 10 years ago, and keeps a collection of easy plants (i.e., those who can take the conditions on offer) outside in summer, and on window sills in the winter.

Véronique has been itching to give this talk since Chris Satch's presentation this past January. She thought there were more background information that could be helpful to place orchids in the context of other plants: essentially, basic botany that should be taught in high school but usually isn't—and if it was, you've probably forgotten since.



President's Message

Dear Members of the Atlanta Orchid Society,

We just wrapped up an exciting September with our participation in the Alabama Orchid Society's 41st Annual Orchid Show, held at the beautiful Birmingham Botanical Gardens on September 19–21.

Congratulations to our friends at the Huntsville Orchid Society for winning the coveted AOS Show Trophy with a score of 83 points!

I want to extend heartfelt thanks to the team that made our society's exhibit possible:

- * Bailey Santwire and Edison Gu for organizing and setting up the exhibit

- * Jon Crate for handling the lights

- * Fi Alonso for ensuring all the plant labels and tags were in the correct AOS format

And special thanks to Steve Schwab, Paul Reavis, Bailey Santwire, Edison Gu, Fi Alonso & Jon Crate for providing their blooming orchids, without which we would have no exhibit!

Our exhibit looked fantastic and was well-rewarded, with numerous blue, red, and white ribbons plus a rosette for Best-in-Class Dendrobium, awarded to Bailey's beautiful *Dendrobium* Burana Pink Lady.

Upcoming Monthly Meeting

Please join us for our next monthly meeting on October 13 at 7:30 PM at ABG's Mershon Hall. This month, our wonderful VP, Veronique Perrot, Ph.D., will be giving a fascinating talk: "Botany for Orchid Enthusiasts."

This promises to be a treat for everyone—whether you're a seasoned grower or just starting your orchid journey. Don't miss it! And of course, bring your blooming orchids for Ribbon Judging—your plants could be the next winners!

Orchid Growing Tips for October

As fall settles in, orchids start preparing for the cooler and shorter days ahead. Here are some reminders for your collections this month:

- * Light – With shorter days, make sure your orchids are still getting enough light. Clean your greenhouse or windows to maximize sunlight. Supplemental lighting may help for light-hungry genera

Continued on p. 4

ATLANTA ORCHID SOCIETY

2025 Officers

President

[Firelli Alonso](#)

Vice-President/Programs

[Véronique Perrot](#)

Secretary

[Janet Sherwood](#)

Treasurer

[Edison Gu](#)

Immediate Past President

[Bailey Santwire](#)

2025 Trustees

[Barbara Barnett](#)

[Kim Williams](#)

[Jon Crate](#)

[Danny Lentz](#)

[Nick Rust](#)

[Steve Schwab](#)

Volunteers

AOS Rep – [Barbara Barnett](#)

Greengrowers – [Danny Lentz](#)

Librarian –

MAOC Rep – [Doug Hartong](#)

Meeting Hospitality – [Dan Alvear](#)

Membership – [Steve Schwab](#)

Silent Auction – [Carson Barnes](#)

Monthly Ribbon Judging – [Barbara Barnett & Carson Barnes](#)

Newsletter – [Véronique Perrot](#) & [Mark Reinke](#)

Orchid Digest Rep – [David Mellard](#)

2026 Show Chair – [Danny Lentz](#)

2026 Show Co-Chair – [Firelli Alonso](#)

Website – [Danny Lentz](#)

Social Media – [Firelli Alonso](#)

The Atlanta Orchid Society Bulletin

Volume 66: Number 10 – October 2025

Newsletter Editors: [Véronique Perrot](#) & [Mark Reinke](#)

The [Atlanta Orchid Society](#) is affiliated with the [American Orchid Society](#), the [Orchid Digest Corporation](#), the [Mid-America Orchid Congress](#), and the [Garden Club of Georgia](#).

**STAY CONNECTED.
STAY INSPIRED. RENEW
TODAY!**



SCAN ME

It's time to renew your
Atlanta Orchid Society
membership for 2026!

EVENTS CALENDAR

October

11 – AOS monthly judging. *Note that judging now starts at 1 p.m.*

13 – Atlanta Orchid Society Monthly Meeting: Véronique Perrot on Botany for Orchid Enthusiasts

November

1 – Atlanta Orchid Society Auction: see details on poster page 4

8 – AOS monthly judging

10 – Atlanta Orchid Society Monthly Meeting: Susan Wilson on Bifoliate Cattleyas

December

8 – Atlanta Orchid Society Monthly Meeting: our Holiday Party!!

13 – AOS monthly judging

January 2026

10 – AOS monthly judging

12 – Atlanta Orchid Society Monthly Meeting: Fi Alonso

31 – Gulf Coast Orchid Society Show (Gautier, MS)

February

9 – Atlanta Orchid Society Monthly Meeting: Mark Reinke

14 – AOS monthly judging

21 – Middle Tennessee Orchid Society Show (Nashville, TN)

Alabama Orchid Society's 41st Annual Orchid Show & Sale

The Alabama Orchid Society hosted its 41st Annual Orchid Show & Sale on September 19–21 at the beautiful Birmingham Botanical Gardens. The show brought together 12 exhibitors, including our own Atlanta Orchid Society, showcasing an impressive 270 entries. Out of these, 19 plants were pulled for AOS award consideration, and six received awards—a testament to the outstanding quality on display.

Our exhibit was a true team effort: Bailey Santwire and Edison Gu skillfully designed and assembled the display, Jon Crate provided the lighting that made the orchids glow, and Fi Alonso ensured every plant was presented with proper labels. The results spoke for themselves, with a professional, eye-catching exhibit that reflected the dedication of our society.

Special recognition goes to the Huntsville Orchid Society, whose exhibit scored 83 points and earned the coveted AOS Show Trophy.

Beyond the ribbons and trophies, the show was a wonderful opportunity to share our passion, connect with orchid friends old and new, and enjoy the vibrant displays. It was truly a fun and memorable weekend!



Atlanta Orchid Society exhibit



Alabama Orchid Society exhibit



Marble Branch Farms exhibit

President's Message

Continued from page 1

like Cattleyas and Vandas.

* Watering – Begin reducing water for orchids that need a winter rest, such as deciduous Dendrobiums and some Catasetinae. Always check media dryness before watering—overwatering in cooler weather can lead to root rot.

* Fertilizing – Switch to a lower-nitrogen fertilizer to help orchids prepare for dormancy and encourage spike initiation in Phalaenopsis and Cymbidiums.

* Temperature – Watch nighttime temperatures. Cymbidiums, Phals, and some Oncidiums benefit from cooler nights to trigger spikes—but be cautious not to let temps drop too low indoors.

* Maintenance – Remove any dead leaves or sheaths that may harbor pests. A clean growing area is your best defense against fall outbreaks of mites, scale, and mealybugs.

Let's keep the energy and camaraderie from the Birmingham show going strong into October. I look forward to seeing all of you at Merston Hall on the 13th!

Happy growing,

Firelli "Fi" Alonso
President, Atlanta Orchid Society
2025



ORCHID AUCTION

**SATURDAY
NOVEMBER 1, 2025**

Preview at Noon
Auction begins at 1:00 PM

**OGLETHORPE
PRESBYTERIAN CHURCH
3016 LANIER DRIVE,
BROOKHAVEN GA**

- ✓ Rare & exotic orchids from top growers
- ✓ Divisions from member collections
- ✓ Great deals and bidding fun for everyone!

FREE ADMISSION – OPEN TO THE PUBLIC
<https://www.atlantaorchidsociety.org>
 Come for the flowers, stay for the thrill of the bid!

Judges' Corner: Monthly Judging at the Atlanta Judging Center, September 9, 2025

SPECIAL NOTE: The Atlanta Judging Center will be changing its monthly starting time to 1 p.m. effective October 2025, immediately following educational training which starts at noon.

Monthly judging on September 13, 2025, for the Atlanta Judging Center had 13 Accredited judges, 1 Associate judge and 4 students comprising 3 teams to judge the 3 orchids entered.

Accredited Judges: Firelli Alonso, Carson Barnes, Barbara Barnett, H.B. Blythe-Hart, Andy Braun, Aileen Garrison (Emerita), Doug Hartong, Lowell Jacks (Emeritus), David Janvrin, David Mellard, Cynthia Van Der Wiele, Charles Wilson, Susan Wilson; Associate Judge: Jon Crate; Student Judges: Edison Gu, Ben Overlie, Samuel Overlie, Paul Reavis. (Photos by Charles Wilson.)

The below two awards were made:
Catasetum Karen Armstrong 'Joan' AM, 81 pts, grown by Andy Braun.

Trichocentrum Kuquat 'Memoria Susan Babish' AM, 80 pts, grown by Firelli Alonso and Jon Crate.

Please join us at our next monthly judging (October 11, 2025) at Oglethorpe Presbyterian Church Fellowship Hall (3016 Lanier Dr NE). Judge training program starts at noon and is open to all ('Judging *Phalaenopsis bellina* and its Hybrids' by Edison Gu), with formal judging at 1:00 p.m. Free and convenient parking.

The following shows have been approved by AOS for 2026:

31 Jan 2026 – Gulf Coast Orchid Society (Gautier, MS), Andy Braun, Show Judging Chair

21 Feb 2026 - Middle Tennessee Orchid Society (Nashville), Tom Harper, Show Judging Chair

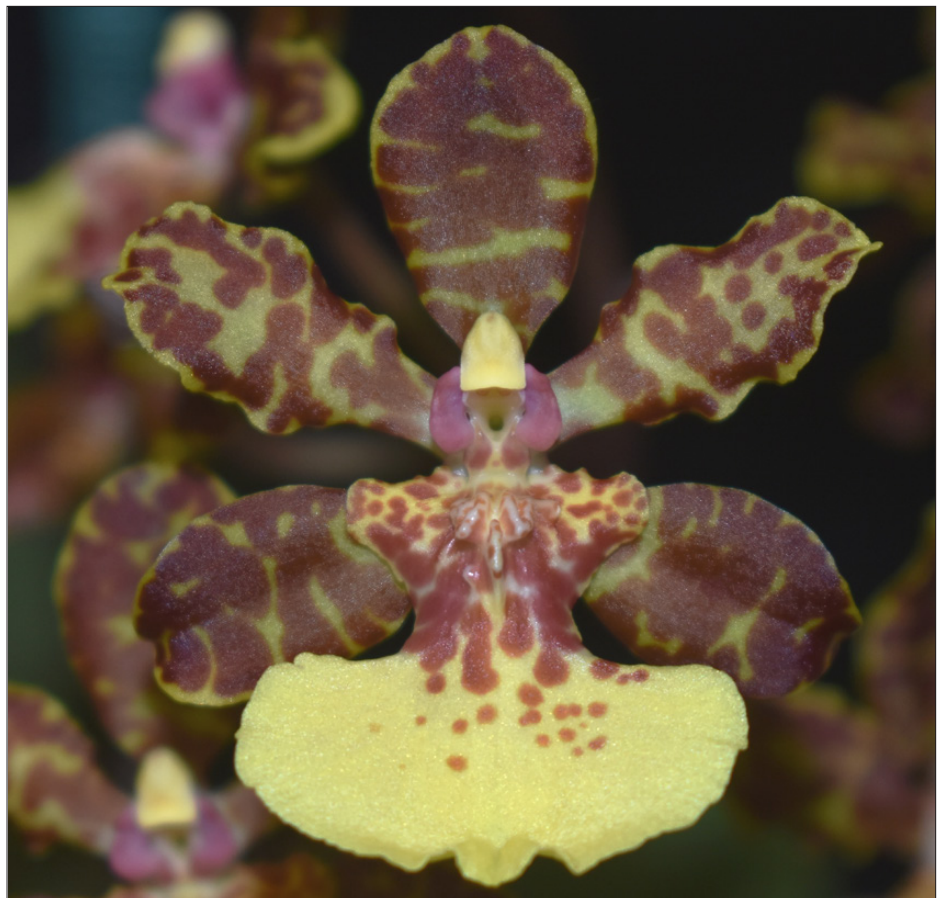
14 Mar 2026 - Atlanta Orchid Society - Bailey Santwire, Show Judging Chair

Best regards,

Charles Wilson
Chair, Atlanta Judging Center



Catasetum Karen Armstrong 'Joan' AM/AOS



Trichocentrum Kuquat 'Memoria Susan Babish' AM/AOS

Judges' Corner: Judging Summary for Alabama Orchid Society Show, September 20, 2025

The Alabama Orchid Society Show was held 19–21 September 2025 at the Birmingham Botanical Gardens. Fourteen accredited judges participated in the efforts: Firelli Alonso, Carson Barnes (Show Judging Chair), Barbara Barnett, H.B. Blythe-Hart, Andy Braun, Ray Bullard, Aileen Garrison (Emerita), Tom Harper, Bailey Santwire, Cynthia Van Der Wiele, Charles Wilson, Susan Wilson, Melissa Garner (Mid-America Center), Robert Hydzik (Carolina Center); Associate Judge: Jon Crate, enabling four judging teams along with student judges Scott Elliott, Edison Gu, and Mark Mills (Mid-America Center).

The show included 12 exhibitors providing 270 entries from which 19 were pulled for AOS award consideration, of which six received awards. (Below photos by Charles Wilson)

The Huntsville Orchid Society exhibit scored 83 points garnering the AOS Show Trophy.



Huntsville Orchid Society exhibit, AOS Show Trophy



Paphiopedilum Majestically Wood 'MBF' AM/AOS



Clowsetum Elizabeth Ann Gallagher 'Maneki Hill' AM/AOS



Paphiopedilum Harold Koopowitz 'Lydia Merkle' AM/AOS



Cattleya Kokubun 'Maneki Hill' AM/AOS

Paphiopedilum Majestically Wood 'MBF' AM, 85 pts, exhibited by Marble Branch Farms.

Cattleya Kokubun 'Maneki Hill' AM, 83 pts, exhibited by Scott Elliott and Susan Hill.

Clowsetum Elizabeth Ann Gallagher 'Maneki Hill' AM, 86 pts, exhibited by Scott Elliott and Susan Hill.

Paphiopedilum Harold Koopowitz 'Lydia Merkle' AM, 81 pts, exhibited by Ed Merkle, Middle Tennessee Orchid Society.

Continued on following page



Rhyncholaeliocattleya Volcano Plum 'Kilauea'
FCC/AOS

Rhyncholaeliocattleya Volcano Plum
'Kilauea' FCC, 90 pts, exhibited by Andy
Braun, Pensacola Orchid Society.

Paphiopedilum Fred's Barbie
'Santwire's Ice' CCM, 85 pts, exhibit-
ed by Bailey Santwire, Atlanta Orchid
Society.

Please join us at our next month-
ly center judging on 11 October 2025 at
Oglethorpe Presbyterian Church. Judg-
ing education (open to all) starts at noon
(this month's program: 'Judging *Pha-
laenopsis bellina* and its Hybrids' by Ed-
ison Gu) with judging now starting at 1
p.m. Free and convenient parking.

The following shows have been ap-
proved by AOS for 2026:

31 Jan 2026 – Gulf Coast Orchid Soci-
ety (Gautier, MS), Andy Braun (Judging
Show Chair)

21 Feb 2026 – Middle Tennessee
Orchid Society (Nashville), Tom Harper
(Show Judging Chair)

14 Mar 2026 – Atlanta Orchid Society,
Bailey Santwire (Show Judging Chair)

Best regards,

Charles Wilson
Chair, Atlanta Judging Center



Paphiopedilum Fred's Barbie 'Santwire's Ice' CCM/AOS

Become an AOS Judge

The American Orchid Society Judging Program

is seeking highly motivated orchid
enthusiasts to join the judging ranks

*Work with other like-minded people in
support of AOS awards programs and
educational efforts*

For more information contact us at
judges@aos.org



Atlanta Orchid Society Monthly Meeting Ribbon Winners for September, 2025

Notes by Mark Reinke; photos by Firelli Alonso and Jon Crate



Rhyncho brassoleya Copper Queen, possibly

Class 1: Cattleya Alliance

Blue: Cattleya No ID – possibly *Rhyncho brassoleya* Copper Queen – Steve Schwab

If I was going to offer an educated guess, I would say this is *Rhyncho brassoleya* Copper Queen, which is a cross between *Bc. Richard Mueller* and *Rlc. Toshie Aoki*. Everything about the growth habit and flowers looks like other examples I have seen of that cross. The flowers tend to go through a color change as they mature owing to the development of more intense yellow pigments. This and all *Bc. Richard Mueller* hybrids are good dependable “houseplant” orchids as long as they get perfect drainage and bright light.

Class 2: Cymbidium Alliance

No Entries

Class 3: Dendrobium Alliance

No Entries

Class 4: Epidendrum Alliance

Blue: *Prosthechea cochleata* – Andy Dott

I have written a number of times about this species over the years. It is prevalent across Mexico, Central America, northern South America, several Caribbean Islands including Puerto Rico, and extends into the Everglades of South Florida. Consistency in flower color and form is observed throughout its range; however, individual plants may exhibit variation in flower size, with the largest specimens reaching nearly four inches in vertical diameter. The flowers are non-resupinate, meaning the labellum is positioned at the top rather than the bottom, and they are produced sequentially as the inflorescence continues to elongate, resulting in extended blooming periods. Mature plants may remain in bloom almost continuously, which makes them highly desirable for cultivation. Optimal growth is achieved by providing filtered bright light, using a pot that is proportionally small relative to plant size, and utilizing a fast-draining substrate. Regular watering is recommended during warmer months, with reduced frequency during cooler conditions.



Prosthechea cochleata

*Psychopsis* Butterfly

Class 5: Oncidium Alliance

Blue: *Psychopsis* Butterfly – Firelli Alonso & Jon Crate

There are four recognized species in the genus *Psychopsis*, and *Pyp. Butterfly* was the second hybrid to cross two of them together. It was registered in 1969 and the parents are *Pyp. papilio* and *Pyp. sanderae*. While three of the four species have ranges that extend through several countries in Central or South America, *Pyp. sanderae* is known only from Peru, and the only species that is found in higher and cooler habitats. Many of the more recent hybrids such as *Pypchopsis* Mendenhall, which has many awards including two First Class Certificates, were de-



veloped through line breeding superior forms of the species back to *Pyp. Butterfly*. To be considered for a flower quality award nowadays, the blooms must have full form, balanced presentation and a natural spread approaching or exceeding five inches. Obviously, flower count is not a factor as *Psychopsis* bear persistent inflorescences that produce a succession of single flowers over many months. Still, expertly grown mature plants have been known to possess as many as ten flowering inflorescences. *Psychopsis* seem to perform best in medium light levels with consistent warmth and regular watering in a media that allows the roots to dry quickly.

Red: *Gomesa* Moon Shadow – Firelli Alonso & Jon Crate

*Gomesa* Moon Shadow



Leomeesia Lava Burst

White: *Leomeesia* Lava Burst – Fred Pippin



**Orchid
Digest**

When you're serious about orchids.

JOIN THE ORCHID DIGEST CORPORATION

Don't let the name fool you, the Orchid Digest is a non-profit membership-based organization dedicated to orchids. Designed to appeal to the mid-range to advanced grower, nothing beats the Orchid Digest. For just \$39/year you get 4 issues of full-color, in-depth articles about orchids. The magazine is large format and the fourth issue of the year is always an extra-special edition devoted to a single genus. For membership application forms contact David Mellard (404-237-1694) or visit www.orchiddigest.com to join online.



American Orchid Society

Education. Conservation. Research.

JOIN THE AMERICAN ORCHID SOCIETY

12 issues of *Orchids*, the Society's monthly full color magazine chock full of insightful articles and tempting ads for plants and supplies.

10% off purchases from the Society's Bookstore and Orchid Emporium.

Reduced or free admission to participating botanical gardens.

For a limited time, if you join for two years you will also get a \$30 gift certificate (good on an order of \$100 or more)

at any one of 13 commercial growers who advertise in *Orchids*.

**Membership now includes access to OrchidPro,
the database that replaces OrchidsPlus**

JOIN TODAY

Single Membership, 1 year - \$79, 2 years - \$153

Student membership, 1 year - \$54, 2 years - \$103

JOIN OR RENEW ONLINE AT www.aos.org

*Paphiopedilum wardii forma album*

Class 6: Slipper Alliance

Blue: *Paphiopedilum wardii forma album* – Steve Schwab

Habitat information from Orchidwiz 20.0: “Northeast Myanmar (Burma) and possibly southwest China. In Burma, plants are found in the mountains along the Tami River near Putao at 3950-4900 ft. (1200-1500 m). They usually grow on the forest floor in shady locations near the base of trees and have their roots in deep leaf litter over rocky soil on steep slopes. Plants may also be found on cliff faces, growing on moss covered rocks with only a few, loosely attached roots. Plants are also reported from Yunnan Province in southwest China, although information on specific collection sites has not been given. There is some speculation that plants imported from China were brought in from Myanmar (Burma) and then re-exported. However, it is entirely possible that *Paphiopedilum wardii* does exist along the upper Salween River.”

While from the group with mottled leaves, *Paph. wardii* grows higher in elevation than most other species with similar leaves. It likely does not do well if subjected to our typical summer heat but has done okay for me in my greenhouse with evaporative cooling. It particularly dislikes bright light and needs to be watered more carefully in winter

when dew and mist are its main sources of moisture in the wild. There more than 500 registered hybrids with *Paph. wardii* in their ancestry. Much of that breeding line comes through *Paph. Petula (wardii x Maudiae)* which was registered in 1943.

Red: *Paphiopedilum Vexillarium* – Steve Schwab

White: *Paphiopedilum Midnight Ember* – Steve Schwab

*Paphiopedilum Vexillarium**Paphiopedilum Midnight Ember*



Phalaenopsis violacea variety *indigo*

Class 7: Phalaenopsis

Blue: *Phalaenopsis violacea* variety *indigo* – Fred Pippin

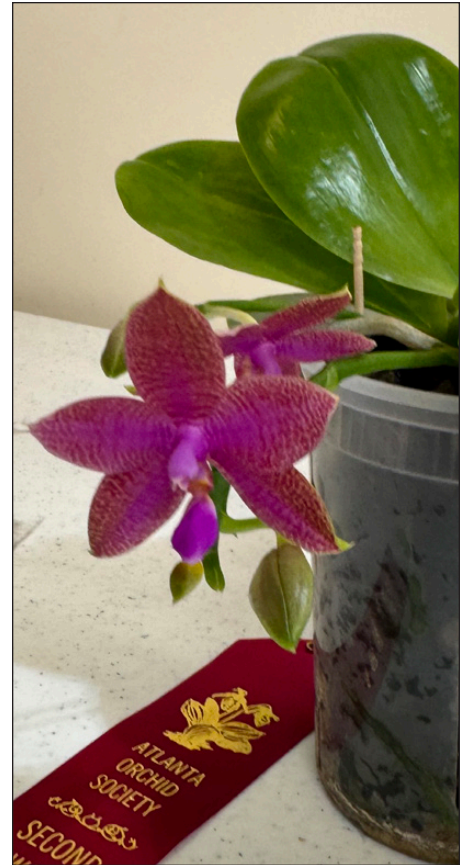
This form of the species was also a blue-ribbon winner last month, so I will repeat “This vivid violet blue form is a horticultural variety, not found in the wild but bred by humans. It closely resembles *Phal. violacea* forma *coerulea*, and distinctions between such color forms are unclear. Fortunately, naming nuances aren’t essential for cultivation—provide steady warmth and humidity, as with other species from Borneo, Sumatra, and Malaya. Grow *Phal. violacea* for its unique flowers; typically, only one or two bloom at a time, yet they re-flower annually. Awarded plants of the magenta type have produced up to 26 flowers, while the violet blue form’s record is 7 flowers on 3 inflorescences out of 260 global awards.”



*Phalaenopsis Charming Warszawa*

Red: *Phalaenopsis* No ID – Steve Schwab

White: *Phalaenopsis cornu-cervi* – Jenny Townes

*Phalaenopsis NoID*

Blue: *Phalaenopsis Charming Warszawa* – Firelli Alonso & Jon Crate

This orchid has won multiple blue ribbons before. All 60+ *Phalaenopsis* hybrids from Char Ming Agriculture in Taiwan feature “Charming” in their names—though why this one is named after Poland’s capital remains unclear. Its flowers are appealing, with a large lip from *Phal. World Class* ‘Bigfoot’ and numerous medium-sized blooms on branched stems from *Phal. equestris*. The petals display a brushed purple center fading into white. It thrives under typical *Phalaenopsis* care: medium light, warm temperatures, and regular watering with brief drying periods.

*Phalaenopsis cornu-cervi*



Vanda Twinkle



Class 8: Vandaceous Alliance

Blue: Vanda Twinkle – Andy Dott

Although this plant was labeled as *Vanda miniata*, I believe it is actually Vanda Twinkle (*V. miniata* x *V. falcata*) based on the inflorescence photo, which matches V. Twinkle's typical loose flowers with narrow segments and a curved nectar spur—traits uncommon in pure *V. miniata*. The blooming period also suggests V. Twinkle, as it flowers in late August, whereas *V. miniata* blooms earlier in the year. Flower color fits both orchids and requirements are nearly identical: grow in a basket with bright, indirect light, ample water, and regular feeding in summer, reducing both in winter.

Red: Vanda Tony – Matt Dudzik

White: Perreiraara Tony Tan Keng Yam – Fred Pippin



Vanda Tony



Perreiraara Tony Tan Keng Yam



Vandachostylis Motes Quantum

**White: *Vandachostylis Motes Quantum* –
Firelli Alonso & Jon Crate**



Cynorkis Oppotract

Class 9: Miscellaneous

Blue: *Cynorkis Oppotract* – Nick Rust

Of the nearly two hundred recognized *Cynorkis* species only a handful are found in cultivation, and out of those, only eight primary hybrids exist. This cross between *Cyn. calanthoides* and *Cyn. fastigiata* was also registered by Nick Rust himself in 2023 and we saw it in flower this time last year. The flowers of both species are somewhat similar, but the latter sit on pedicels that have a more upright angle which is probably the reason for the species' name. Both are native to Madagascar, with *Cyn. calanthoides* growing as an epiphyte on Pandanus trees or as a terres-

trial in open areas among grass and rocks and *Cyn. fastigiata* growing as a terrestrial along cool streams and forest edges. Both species prefer filtered light and high humidity, with plenty of water and feeding in summer and only enough water in winter to keep the plants from totally drying out. A coarse terrestrial planting mix is recommended.



Catasetum pileatum variety *aurantiacum*

Red: *Catasetum pileatum* variety *aurantiacum* – Nick Rust

Red: *Dendrochilum magnum* – Fred Pippin

Red: *Habenaria* Hampson – Firelli Alonso & Jon Crate

White: *Pectabeneria* Pekin – Nick Rust

White: *Pecteilus hawkesiana* x *Habenaria xanthocheila* – Nick Rust



Dendrochilum magnum



Habenaria Hampson



Pectabeneria Pekin



Pecteilus hawkesiana x *Habenaria xanthocheila*