



# The Atlanta Orchid Society Bulletin

*The Atlanta Orchid Society is affiliated with the American Orchid Society,  
The Orchid Digest Corporation and the Mid-America Orchid Congress.*



Newsletter Editor: Margie Kersey

July 2009

[www.AtlantaOrchidSociety.org](http://www.AtlantaOrchidSociety.org)

Volume 50: Number 7

## JULY MEETING

**Topic:** Miniature Orchids for the  
Cattleya Grower  
**Speaker:** Alan Koch  
Gold Country Orchids

**8:00 pm Monday, July 13**  
**Atlanta Botanical Garden, Day Hall**



Alan Koch owns and operates Gold Country Orchids where he specializes in miniature and compact Cattleya's. Alan started growing orchids in 1969 with 3 Cymbidiums given to him by an aunt. While in college, he became interested in other orchids and discovered many

would grow outdoors in Southern California. He has moved five times as his orchid obsession has led to the need for more growing space. With the last move, he purchased 10 acres of land in Lincoln, California for his 300,000 orchids. He is recognized as an expert in the Brazilian Cattleya alliance and a trend setter in miniature Cattleya breeding. Alan has been published in the Orchid Digest, and the American Orchid Society magazines. He has also been published in the proceedings of the World Orchid Conference. He is an internationally known speaker. He is a past member of the AOS Judging Committee, and the Research Committee, as well as an Accredited Judge and is Vice-chair and Training Coordinator for the California Sierra Nevada Judging Center. Alan also served two terms on the Orchid Digest Executive Committee and Board of Directors, and is one of the current directors, as well as a Trustee for the AOS.



## Support the AOS

This beautiful pin makes a wonderful gift and can be worn and enjoyed by any orchid lover. Offer them to your club members, give them as awards, present them in recognition of service to your club officers — or give them to the orchid lovers in your life. Most importantly, wear them to show your support of the AOS and your involvement in our amazing orchid community. Proceeds from the sale of this pin benefit the American Orchid Society.

Size: 1 ½ inches weight ½ oz “Pewter base with faux rhodium finish”

(Thank you to Dawn Vertrees, award-winning orchid jewelry artist, for her original design and assistance in manufacturing. [www.dawnvertrees.com](http://www.dawnvertrees.com))

**Cost: \$25** (price includes the pin as well as a converter to also wear this pin as an attractive necklace, as well as shipping and handling.)

**Order online! Go to [www.aos.org](http://www.aos.org) and click SHOP at the top of the page.**

### Inside This Issue

#### Page

- 2..... AtLOS Officers  
Minutes of the May AtLOS Meeting
- 3 ..... Minutes of the June AtLOS Meeting
- 4 - 8.. Table Awards - May
- 9-13.. Table Awards - June
- 14 ..... May AOS Awards
- 15 .... June AOS Awards
- 16 .... What you missed in June
- 17 .... Upcoming Name Changes - AOS article

*All material in the Atlanta Orchid Society Bulletin is copyrighted. The articles and photographs are the property of the authors or the Atlanta Orchid Society. Nothing contained herein may be reproduced without permission of the owners.*

**THE ATLANTA ORCHID  
SOCIETY**

**Officers**

*President* - **Jeff Whitfield**  
770-634-6153  
[jeffers@theAtlantaOrchidCo.com](mailto:jeffers@theAtlantaOrchidCo.com)

*Vice-President/Programs* -  
**Fred Missbach**  
[fredmissbach@aol.com](mailto:fredmissbach@aol.com)

*Secretary* - **David Glass**  
404-377-4187  
[orchidprof@aol.com](mailto:orchidprof@aol.com)

*Treasurer* - **Reba Herzfeld**  
4798 Summerset Lane  
Dunwoody, GA 30338  
770-394-3731  
[rebareneek@aol.com](mailto:rebareneek@aol.com)

*Immediate Past President* -  
**Mark Reinke**  
[Markreinke@att.net](mailto:Markreinke@att.net)

**Directors**

**Bob Grzesik** (2009)  
404-873-0699  
[curmax@msn.com](mailto:curmax@msn.com)

**James Van Horne** (2009)  
[Jvanhorne@windstream.net](mailto:Jvanhorne@windstream.net)

**Terry Glover** (2010)  
678-705-7387  
[Adreidese@msn.com](mailto:Adreidese@msn.com)

**Roy Harrow** (2010)  
770-434-8059  
[Roy.Harrow@asurant.com](mailto:Roy.Harrow@asurant.com)

**Geni Smith** (2011)  
678-817-1915  
[Geni.smith@yahoo.com](mailto:Geni.smith@yahoo.com)

**Maureen Pulignano** (2011)  
404-869-6980  
[Maureen@deefalt.com](mailto:Maureen@deefalt.com)

**Other Volunteers**

*Greengrowers*

*Webmaster*  
**John O'Connell**  
[joconnel@bellsouth.net](mailto:joconnel@bellsouth.net)

*Librarian* - **James Van Horne**  
*Show Chair* - **Roy Harrow**  
[Roy.Harrow@asurant.com](mailto:Roy.Harrow@asurant.com)

*Hospitality* - **Geni Smith**  
*MAOC Rep* - **Doug Hartong**  
[catmando@mindspring.com](mailto:catmando@mindspring.com)

*AOS Rep* -  
*Society Auction Chair / Orchid Digest Rep* - **Fred Missbach**  
[fredmissbach@aol.com](mailto:fredmissbach@aol.com)

*Newsletter* - **Margie Kersey**  
[Margie@callkbs.com](mailto:Margie@callkbs.com)

**May 11, 2009 Meeting  
The Atlanta Orchid Society**

The May meeting of the Atlanta Orchid Society was called to order by President pro-tem, Roy Harrow.

On motion and second from the floor the minutes were approved as published.

Reba Herzfeld presented the treasurer's report, which was approved on motion and second from the floor.

There was no old business.

Roy called for new business.

Nancy Newton was presented with the award for the first quarter's ribbon judging, which she accepted on behalf of her husband, David Glass.

The new parking arrangement at the Botanical Garden was discussed.

The following announcements were made:

Redland Orchid Festival - May 14th-17th

IPA Meeting at Lines Orchids - June 6th

Greengrowers outing at Marble Branch Farms in Wallhaala, SC - June 27th

Roy's Auction - last Saturday in July

Birmingham Orchid Show - in September

MAOC in October

Maureen Pulignano announced that David Glass was not present due to his recent bone marrow transplant and suggested that members send him cards and best wishes for a speedy recovery.

While judges Doug Hartong, David Kessler, David Mellard & James Van Horne finalized their decisions on ribbon awards for the evening, we had our refreshment break.

Ribbon awards were announced and displayed.

Roy introduced our speaker, Steve Champlin, of Floralia, who presented a very information talk on Native Orchids of Brazil.

Orchids donated for raffle - Roy Harrow - and, refreshments donated by Geni Smith, Doug Hartong, Kynne Gollub, Marianne Gilmore, Terry Glover, Bob Grzesik and JoJo Stickney

There being no further business, the meeting was adjourned.

Respectfully submitted,  
Maureen Pulignano  
Acting Secretary

## **Atlanta Orchid Society Meeting Minutes**

**June 8, 2009**

President Jeff Whitfield called the meeting to order. Jeff then welcomed visitors who introduced themselves.

Reba Herzfeld gave the May Treasurer's report, indicating that the Society's bank balance is \$11,683.10.

Jeff announced that the grand reopening of Peach State Orchids is June 12-14. Peach State has received a great deal of new stock for this event. Refreshments will be provided.

The Green Growers outing to Marble Branch Farms is Saturday, June 27. Please RSVP to Mark Reinke or Gary Collier. Chicken will be provided. Please bring a covered dish or contribute \$2.

Roy Harrow reported on the recent International Phalaenopsis Alliance meeting and plant auction in Tennessee. He mentioned several commercial products to control slugs and scale.

Roy's plant auction is Saturday, July 25. Bring any orchids you want to auction and a pot luck dish to feed two people.

Jeff reminded everyone that American Orchid Society judging is the second Saturday of each month at the ABG starting with a training session at noon and judging at 1:30 or 2:00 p.m.

Jeff reported that Sara Groves was hospitalized in the Newton County hospital but was in good spirits.

The Society Board of Trustees will meet in the next several months. Anyone with potential agenda items should contact Jeff or one of the other Board members.

David Mellard presented the monthly judging results and thanked members for bringing plants.

The speaker was Geri Powell from the Orchid Gallery in Signal Mountain, Tennessee. She presented a talk on cool growing orchids, mainly masdevallia and miltoniopsis, and discussed her custom-made clay evaporative cooling pots designed for these species.

Our thanks go to the table award judges: David Mellard, James Van Horne, and Paul Thurner.

We thank those who brought plants for the raffle table: Fred Pippin, Fred Missbach, Roy Harrow, Hal Morrison, and Bob Grzesik.

Our thanks also go to those individuals who brought refreshments: Geni Smith, Cheryl Bruce, Marianne Gilmore, Cameron Carter, and others.

Roy conducted the plant raffle, and the meeting was adjourned.

Respectfully submitted,  
David Glass

### **Join the Atlanta Orchid Society**

Membership in the Atlanta Orchid Society is \$30 for individuals or \$45 for households. Yearly membership runs January 1 through December 31. Anyone joining in the third quarter will get a 50% discount on the current year's membership. Anyone joining in the fourth quarter will purchase a membership for the following year. You can join at one of our monthly meetings, or contact the society's Treasurer (see page 2) for a membership application.

For directions to the Atlanta Botanical Garden, please visit their website at [www.atlantabotanicalgarden.org](http://www.atlantabotanicalgarden.org)

# Table Awards - May

*Photos and Commentary  
courtesy of Mark Reinke*

## Class I – Cattleya Alliance

(Please note I am using the currently accepted RHS names following the recent publishing of Genera Orchidacearum Vol 5)

### SPECIES

**Blue- *Cattleya schilleriana* ‘Anda’ – David Johnston**



*Cattleya schilleriana* ‘Anda’

Here is a good quality example of this semi-dwarf *Cattleya* species from the state of Espirito Santo in northeast Brazil, with a nice flat lip and good color and markings on the undulating segments. In the wild, they are found on mossy rocks and cliffs above rivers, where humidity stays high year round in spite of low rainfall in both winter and summer. Maintaining good humidity is one of the keys to survival of *C. schilleriana* in cultivation. Plants also do best either mounted or in a basket, with bright light and intermediate temperatures. It is normal for the leaves to be stained and shaded with purple in this species. Give plenty of water while new growths are forming, but allow the roots to dry quickly, and reduce water in late fall and winter when growths are mature. The small stature and relatively large, fragrant flowers with interesting patterns have made this species popular as a hybrid parent, and nearly 3,800 registered crosses include it in their ancestry.

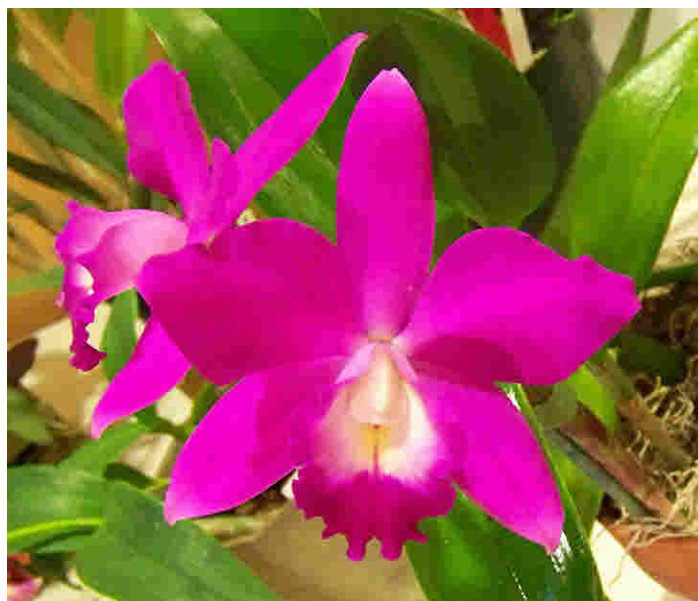
**Red – *Cattleya milleri* – Gary Collier/ Mark Reinke**

**White – *Cattleya cinnabarina* – David Johnston**

### HYBRIDS

**Blue – (Entry form says: *Potinara* ‘Fairyland’ ??)  
– Fred Pippin**

This member did not respond to my email request for additional information so I have unable to determine exactly what this hybrid with compact form and intense red-purple color is. It is definitely not *Cattlianthe* Fairyland (Candy Tuft x *C. Beaufort*), which would be pale pink to pale yellow on a mini plant. The flowers on this ribbon winner are very similar to the hybrid *Ctt. Secret Love* (Candy Tuft x *C. Mini Purple*) and if it is not that hybrid, than it is almost certainly a similar cross using *C. Mni Purple*. Sometimes both tags and memories fade – when in doubt choose ‘industrial’ markers for your tags – regular so-called ‘permanent’ markers frequently do not stand up to the elements as well as the name implies.



*Potinara* ‘Fairyland’

**Red – *Cattleya Sparkling Rose* – Gary Collier/ Mark Reinke**

**White – *Caulaelia Margaret Klehm* – Gary Collier/ Mark Reinke**





***Grammatophyllum martae***

## **Class II – Cymbidium Alliance**

### **Blue – *Grammatophyllum martae* – Maureen Pulig-nano**

*Gram. martae* is a robust growing orchid from Negros Island in the Philippines. The bloom spikes emerge from the base of stout pseudobulbs and may extend up to 5 feet and carry up to 80 blooms about 3 inches across. The flowers are somewhat cupped with a base color of yellow-green that is almost entirely obscured with an overlay of purple blotches, giving the impression of a brown flower. As in some other members of the genus, the first few flowers of the inflorescence are often not fully developed and sterile. *Grammatophyllum* require very bright, warm and humid conditions to flourish and provide their annual display of long lasting flowers with plenty of water and fertilizer when actively growing. Both this species and *Gram. scriptum* are at the smaller end of the size scale for this genus, but still require plenty of space.

## **Class III – Dendrobium Alliance**

### **Blue – *Dendrobium atrovioleaceum* – Gary Collier/ Mark Reinke**

*Dendrobium atrovioleaceum* is native to New Guinea and a few surrounding islands where it grows in the rainforests that have high year round rainfall and very even temperatures. It is an easy orchid to keep happy, however, under “windowsill” conditions, not requiring high light or seasonal cooling to grow and flower well. The interesting speckled blooms with a violet striped lip are extremely long lasting, and plants remain in flower from 5 to 6 months each year, peaking in spring. As with other New Guinea types, this *Dendrobium* produces inflorescences off mature canes, both old and new, for a number of years, leading to a showy display each bloom season. There is some fragrance with this species as well. It can be grown mounted if summer humidity can be kept high and watering is frequent, otherwise a smallish pot with well draining media is best. Plastic pots may work better with gravel in the bottom to counterbalance the rather top heavy growth habit of the plants.



***Dendrobium atrovioleaceum***

### **Red – *Dendrobium trantuanii* – Greg Smith**

### **White – *Dendrobium* Bonnie Riley – Barbara Barnett**



***Catyclia* Thumper McClain 'Summer Storm'**  
**Class IV - Epidendrum Alliance**

**Blue - *Catyclia* Thumper McClain 'Summer Storm' – David Johnston**

*Catyclia* Thumper McClain, registered in 1977 by Jones & Scully, is a perfect example of why I frequently insist that more intergeneric breeding should be done using *Encyclia*. In this case, *E. tampensis* v. *alba* was crossed with *C. Little Angel*, a hybrid that is mainly *C. loddigesii*, and the results are as charming as one could hope for. The plant is compact and produces multiple leads like *E. tampensis*, with many spikes of comparatively large, pastel pink flowers with a refined look. More than likely, these parents make this orchid very adaptable and easy plant to grow as well. The plants that remain in cultivation today are probably divisions out of the original cross. This particular cultivar deserves to be meri-cloned and made available to orchid lovers on a larger scale.

**Red - *Encyclia bractescens* – Gary Collier/ Mark Reinke**

**White – *Barkeria spectabilis* – Gary Collier/ Mark Reinke**

### **Newsletter Submissions**

To submit material for the newsletter or to sign up for the email version of this newsletter, please contact Margie Kersey.

The deadline for submission is the 20th of each month.

Margie@callkbs.com



***Miltonia phymatochila* 'Easter Cloud'**

### **Class V – Oncidium Alliance**

**Blue – *Miltonia phymatochila* 'Easter Cloud' – Gary Collier/ Mark Reinke**

Until recently, this orchid had been recognized as *Oncidium phymatochilum*, and it really bears no close resemblance to any other species in either genera. Plants with more or less identical flowers, but some vegetative differences, are found in two widely separated locations, Southeast Brazil and Southern Mexico and Guatemala. The tough compressed pseudobulbs and the single leathery leaf they bear are both generally flushed bronze. Wiry inflorescences emerge in winter on maturing growths and extend into a branched panicle with many smallish, well spaced, spidery flowers with recurved segments that are delightfully fragrant and create a cloud-like effect peaking in late spring. The roots of this species require excellent drainage and the plants generally perform better mounted or in baskets, with plenty of water in summer, and somewhat less in winter. Winter temperatures need to be cooler and should drop into the 50's at night in order for *Milt. phymatochila* to flourish.

**Red – *Miltonia* Andrea West 'Wild Wild West' – Geni Smith**





## Class VI – Cypripedium Alliance

**Blue – *Phragmipedium* Penns Creek Cascade – Fred Pippin**

**Red – *Paphiopedilum* Saint Low – Maureen Pulignano**

**White – *Phragmipedium* Wossner Supergrande – Maureen Pulignano**

## Class VII – Phalaenopsis Alliance

**Blue – *Doritenopsis* Champion Lightning ‘Kaminali’ – Reba Herzfeld**

The striking pattern of *Dtps.* Champion Lightning was first hinted at over 40 years ago with the introduction of one of its ancestors, *Phal.* Lipperose, in 1968. Some clones of that hybrid were primarily white, with faint pink irregular staining on the outer edges of the segments. In this hybrid, registered in 2007, that trait has been amplified significantly and the irregular, jagged purple markings on a bright white background are complimented with a deep purple lip. As in the case of the ‘Harlequin’ *Phalaenopsis*, it may take a while for judges to warm up to this bold breeding direction. But *Dtps.* Champion Lightning already has superb size, form and an excellent ‘tiling’ presentation of the inflorescence going for it to make things easier! Are more hybrids with similar markings in additional color combinations coming in the future? I suspect so!

**Red – *Phalaenopsis* Wedding Promenade – Fred Pippin**

**White – *Phalaenopsis* Glad Dawn – Geni Smith**

***Phragmipedium* Penns Creek Cascade**

### **Learn about Orchids - for free!**

If you are looking for orchid information - try the American Orchid Society web site at [WWW.AOS.org](http://WWW.AOS.org) Much of the web site, including the forum, is open to everyone. There is a “Member’s Only” section that has great information and we do want you to join the AOS and get our great magazine, *Orchids*, as well as access to that part of the web site, but if you aren’t ready for that right now don’t hesitate to visit the web site. At the web site under “Orchid Information” there is a place to sign up for a FREE Beginner’s Newsletter. And there are also culture sheets. If you give an orchid as a gift it is nice to include a culture sheet with it. You can download those at no charge - FREE. Also you can download them to give away at shows or at meetings.



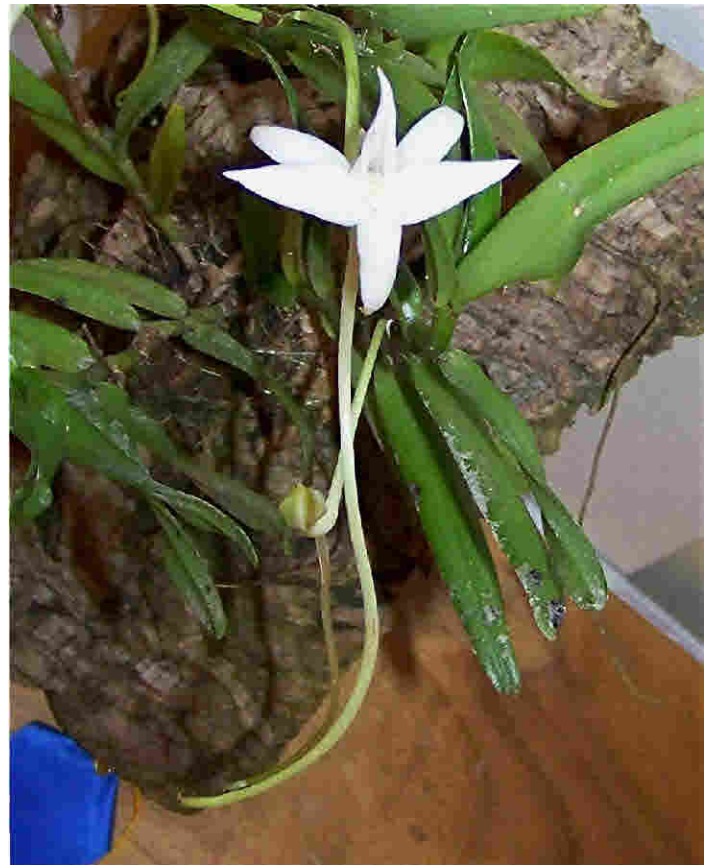
***Doritenopsis* Champion Lightning ‘Kaminali’**

## Class VII – Vanda Alliance

### Blue – *Angraecum florulentum* – David Mellard / Sal Marino

*Angcm. florulentum* is a small, slow growing, attractive monopodial orchid from the Comoros Islands that generally stays under a foot tall and tends to form new growths around the base that eventually grow into a clump. The stems are somewhat lax and are best accommodated either mounted or in a hanging basket. It has white flowers typical of the group, non-resupinate, borne 2 to 4 on a short inflorescence and generally under two inches in spread, but with a trailing nectary spur that can be up to 4 inches long. They are sweetly fragrant at night to attract moths on the hunt for nectar. Like many smaller Angraecoids, this species likes fairly shaded, warm conditions, and needs both high humidity and good air movement to flourish. There are currently just two registered hybrids using this species and in both cases the other parent was also an *Angraecum sp.*

### Red – *Angraecum elephantinum* – Cora Ramborger



*Angraecum florulentum*

## Class IX – Miscellaneous

### Blue – *Lycaste Chita Sunset* – David Mellard / Sal Marino

This large, full flowered *Lycaste* is essentially line breeding of *Lyc. skinneri* over many generations. That species makes up almost 85% of the genetic background, but a small amount of 3 other species, one green, one yellow and one brown-purple, shift the color from the pale, rosy tones typical of *Lyc. skinneri* to much richer, deeper, more saturated hues. While the addition of the other species gives this hybrid more temperature tolerance as well, especially for summer warmth, culture is otherwise the same as for *Lyc. skinneri*. Bright, but filtered light, good air



*Lycaste Chita Sunset*

movement, rather high humidity, plenty of water with only slight drying in between the bulk of the year, with somewhat less water in late winter into spring for flowering. If leaves are allowed to remain wet, these orchids are highly susceptible to fungal disease, so it is best to never water late in the day and keep the air moving at all times.

### Red – *Coryanthes Mamadon* – Cora Ramborger

### White - *Oberonia mucronata* – Maureen Pulignano



# **Table Awards - June**

*Photos courtesy of Bill White  
Commentary courtesy of Mark Reinke*

## **Class I – Cattleya Alliance**

### **Blue- *Cattleya* (formerly *Laelia*) *Pacavia* – Fred Missbach**

*Cattleya Pacavia* is a beautiful and vigorous hybrid between *C. purpurata* and *C. tenebrosa* that was registered by J. Veitch & Sons in 1901. They were the same firm that introduced such seminal hybrids as *C. Enid* (*mossiae* x *warscewiczii*) and *C. Fabia* (*dowiana* x *labiata*) that are found in the ancestry of nearly every modern large flowered cattleya in existence. Curiously, *C. Pacavia* seems to have been under appreciated, as to date, no awards have ever been given to it by the AOS, and a scant 22 hybrids include it in their ancestry. This is made even more astounding by the fact that the two species which are its parents have well over 30,000 progeny between them!

### **Red – *Cattleya warscewiczii*- Fred Missbach**

### **White – *Cattleya* (formerly *Laelia*) *Pacavia* – Maureen Pulignano**

## **Class II – Cymbidium Alliance**

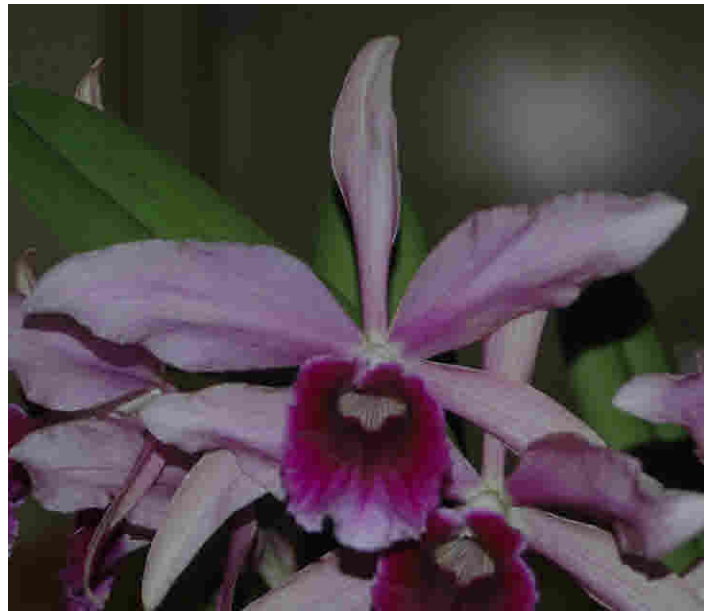
**No entries**

## **Class III – Dendrobium Alliance**

**No Entries**

## **20th World Orchid Conference**

Maybe you missed the 19th World Orchid Conference (WOC) in Miami in January 2008. What a shame! It was the first time the WOC had been held in the US for about 20 years. The WOC isn't held every year, so it can be a challenge to attend one. The 20th WOC has been announced - it will be held in Singapore on November 14 - 23, 2011. You have lots of time to plan (and save!). Keep your eye on the AOS website for additional information. By the way, the 21st WOC has been announced as well - it will be 2014 in Pretoria, South Africa.



***Cattleya* (formerly *Laelia*) *Pacavia***

Dear Orchid Specialists,

I hope everyone is doing well and staying cool as the summer season has definitely arrived!

It's time again to all get together for some continuing education. The date and time will be Saturday, July 11 from 10 a.m. to 12 p.m. in the Georgia Pacific Classroom. The main focus will be visitor interactions and Matt Richards will present a program on Florida Orchid Conservation Projects.

I think it'd be nice to have a potluck brunch. Could everyone bring one food item to share with the group? The Garden will provide plates, napkins, utensils and drinks.

I'd also like everyone to be thinking about friends, family and other acquaintances that might be interested in joining the Orchid Specialist volunteer group. You are invited to bring them to this meeting so they can enjoy the Orchid Center and talk about becoming a member of the group. For your recruiting efforts, if your recruitee successfully joins the Orchid Specialists, I will happily provide you with four free guest passes to bring friends and family back to visit the Garden, as well as an Orchid plant. If you haven't been down to the Garden to volunteer in a while, this is a good way to become involved again and to begin volunteering on a weekly or monthly basis.

Please confirm your attendance by reply email. This should be a fun get-together and I look forward to seeing everyone!

Sincerely,  
Josh Todd  
Volunteer Manager

## Class IV - Epidendrum Alliance

### Blue - *Prosthechea radiata* 'Valley Isle' – Geni Smith

This species comes from a widespread natural range that includes many parts of Mexico and Central America where it is found growing in tropical forests at elevations ranging between 500 and 6500 feet above sea level. The wide range of habitats makes it adaptable from cool to warm conditions in cultivation. The species name is in reference to the radiating purple lines on the white lip, which is help uppermost above greenish or creamy sepals and petals on the fragrant flowers. *Prosthechea* was previously included in *Encyclia*, but is distinguished by exhibiting softer, more elongated and flattened pseudobulbs, and thinner, more pliable leaves than the 'true' *Encyclia*. Some taxonomist further separate species such as this one that are nonresupinate into the genus *Anacheilium* (literally 'lip upwards') though this is not currently accepted by either the RHS or Kew's Monocot List. There are close to 60 species that were originally described as *Anacheilium* by Hoffmannsegg in 1842, and it is possible the name will become accepted as correct at some time in the future. All of the *Prosthechea* require less bright and somewhat more moist conditions than typical *Encyclia* to grow and flower well. The greater moisture, however, needs to be coupled with excellent drainage, and plants should be given less water in winter in proportion to how cool they are grown.

### Red - *Encyclia parviflora* – Roy Harrow



*Beallara Tahoma Glacier*



*Prosthechea radiata* 'Valley Isle'

## Class V – Oncidium Alliance

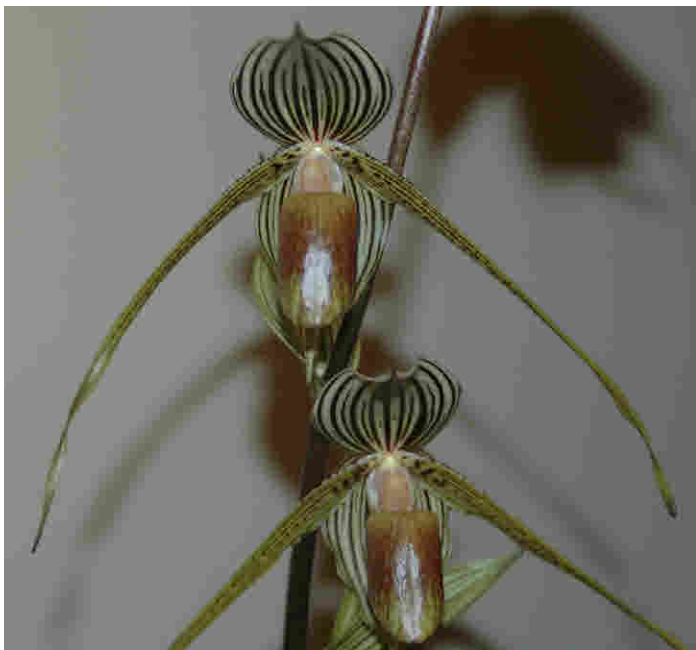
### Blue – *Beallara Tahoma Glacier* – Gene Gadilhe

*Beallara* combines *Brassia* + *Cochlioda* + *Miltonia* + *Odontoglossum* and this example was registered by the prolific amateur orchid hybridizer W. Goodale Moir in 1970. Since its introduction, *Beallara Tahoma Glacier* has received a number of awards, including an FCC for the 'Olga' clone in March of 1979. Even though no clonal name was indicated with this plant, it resembles the 'Ithan' AM/AOS form which is widely available commercially. The species in the background of this hybrid come from a variety of climate zones, favoring cool to intermediate temperatures and shaded to bright indirect light. Plenty of water and fertilizer is appreciated when actively growing, with less in winter when plants rest and prepare to bloom.

### Red – *Rodrumnia* (Bravo x Just Dandy) – Fred Missbach

### White – *Lockhartia oesterdii* – Maureen Pulignano

### White – *Wilsonara* Red Pacific 'Deep Shadows' HCC/AOS – David Glass



***Paphiopedilum* Bel Royal**

*anum*) where a species with outstanding traits was used as the other parent. All the multifloral *Paphiopedilum* perform best with moderately bright light, warm temperatures, good air movement and plenty of water coupled with good drainage.

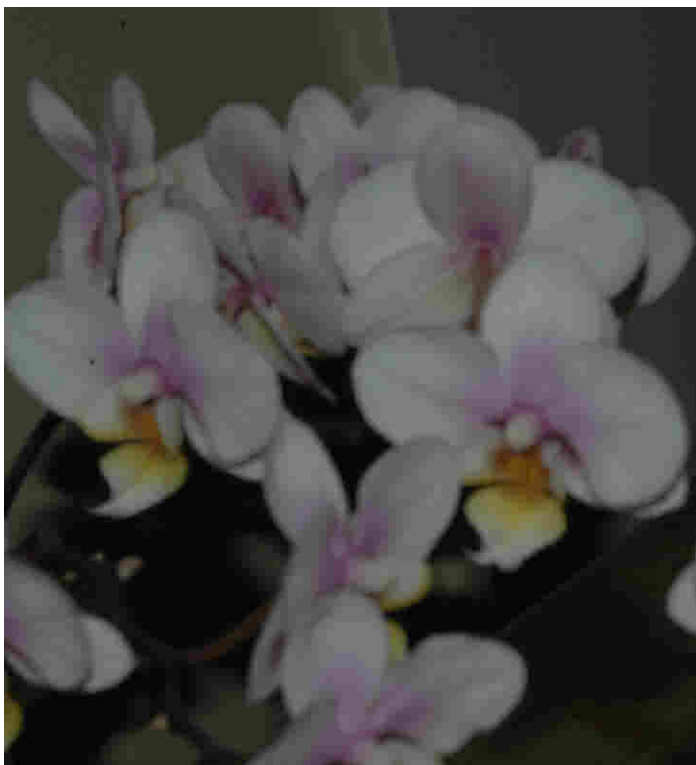
**Red – *Paphiopedilum* Ho Chi Minh – David Mellard/ Sal Marino**

**White – *Paphiopedilum* Bel Royal – Reba Herzfeld**

## **Class VI – Cypripedium Alliance**

**Blue – *Paphiopedilum* Bel Royal – David Glass**

*Pah.* Bel Royal is a primary hybrid between two multifloral species, the stately *Paph. rothschildianum* and *Paph. kolopakingii*, a fairly recent discovery that can bear up to a dozen or more simultaneously opening flowers. It is one of the more successful hybrids using this species, with a flurry of awards in the last decade, although only about half were scores of 80 points or more. There was much excitement early on about using *Paph. kolopakingii* as a parent, given its highly floriferous nature. Unfortunately, some of its less desirable traits, such as nodding flowers somewhat small for the plant size, have tended to dominate, while the impressive flower count has tended to be recessive. The exceptions have been crosses like *Paph. Bel Royal* and *Paph. Kolosand* (x *sanderi-*



***Phalaenopsis* I-Hsin Amy**

## **Class VII – Phalaenopsis Alliance**

**Blue – *Phalaenopsis* I-Hsin Amy – Geni Smith**

**Red – *Doritenopsis* Sweet Strawberry ‘Shortcake’ HCC/AOS – Geni Smith**

**White – *Phalaenopsis* unknown – Gene Gadilhe**

### **JOIN THE ORCHID DIGEST CORPORATION**

Don't let the name fool you, the Orchid Digest is a non-profit membership-based organization dedicated to orchids. Designed to appeal to the mid-range to advanced grower nothing beats the *Orchid Digest*. For just \$32 per year you get 4 issues of full-color, in-depth articles about orchids. The magazine is large format and the fourth issue of the year is always an extra-special issue devoted to a single genus.

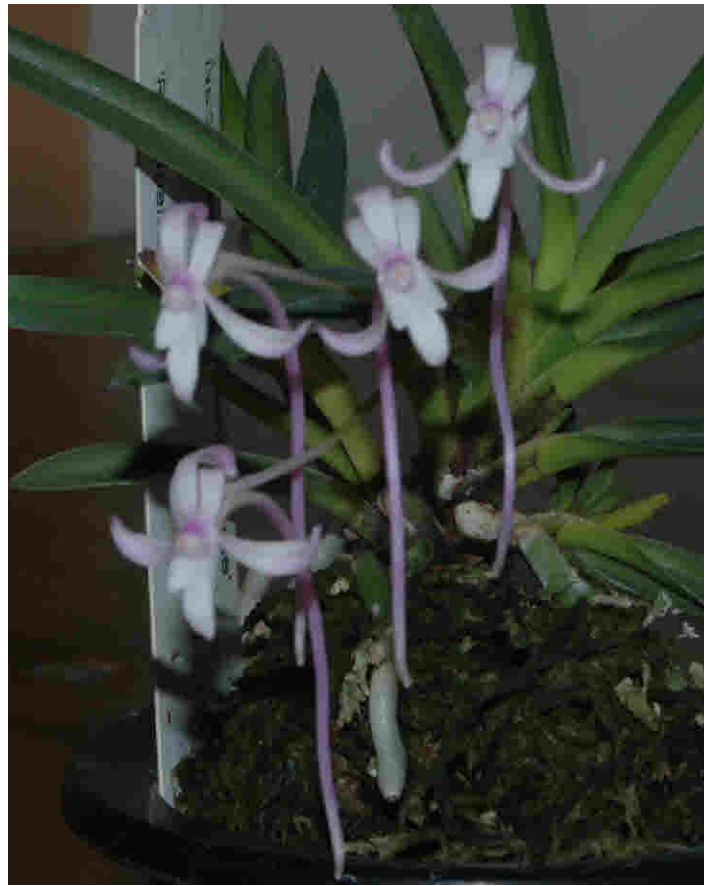
***For membership application forms contact  
Fred Missbach (404-237-1694)***



## Class VII – Vanda Alliance

### Blue – *Neofenetia falcata* ‘Benisuzume’ – David Glass

*Neofenetia falcata* is a delightful miniature vanda-ceous orchid native to the Japanese islands where it is revered in a way few Westerners can fully comprehend. It has been cultivated since at least the 1660's and there are countless forms available, many of which sell for astoundingly high prices. Quoting from [www.neofenetia.com](http://www.neofenetia.com): “To the Japanese, beauty is found in all types of alterations of the “typical form” and is extended to not only the flower, but to other parts of the plants, such as the stem (jiku), flower stalk, nectary (kyo), leaves (tennba), junction between leaves and stem (tsuke), roots and even root tips! An elaborate classification system has been created by the Japanese to explain and catalog all of these differing characteristics.” Though the typical wild forms look like much miniature *Vanda* with fans of curved leaves, there are many foliage variations in cultivation. I am very excited right now to have the first spike on a ‘bean leaved’ form I purchased several years ago. It has stiff, straight, paddle-shaped leaves something like the open half of a split bean pod. The ribbon winning ‘Benisuzume’ clone has flowers that are almost solid pink, in contrast to the typical pure white, and other color variations include yellow, green, and white with red nectary. The leaf variations are far too numerous to list, but the most coveted and expensive forms have white or cream variegated foliage. *Neof. falcata* grows on branches and twigs in deciduous forests where it gets shade and much rainfall in summer, and near full sun and less moisture in winter. In cultivation, winter nights in the 50's at least are required to keep plants happy and healthy, and though they need less water, they should not completely dry out at any time. Flowering takes place from late spring into early fall, with many inflorescences of fragrant flowers possible on mature plants with numerous growths.



*Neofenetia falcata* ‘Benisuzume’

### Red – *Vanda* Gordon Dillon ‘Lea’ AM/AOS x *Ascocenda* Suksamran Spot – Maureen Pulignano

### White – *Ascocentrum ampullaceum* – Geni Smith

#### Advertising

Support the Atlanta Orchid Society while promoting your business by running your ad in our newsletter.

#### Advertising Rates

1/8 page \$5 per month  
1/4 page \$10 per month  
1/2 page \$20 per month

Contact [Margie@callkbs.com](mailto:Margie@callkbs.com) for more information

*The size and number of ads may be limited  
at the discretion of the editor.*

#### JOIN THE AMERICAN ORCHID SOCIETY

For \$60.00 per year, you reap the following benefits:

- 12 issues of *Orchids*, the Society's monthly full color magazine chock full of insightful articles and tempting ads for plants and supplies.
- 10% off on purchases from the Society's Bookstore and Orchid Emporium. Reduced or free admission to participating botanical gardens.

For a limited time, if you join for two years (\$108) you will also get a \$30 gift certificate (good on an order of \$100 or more) at any one of 13 commercial growers who advertise in *Orchids*. **JOIN TODAY.** For information, contact Evan Dessasau (404-241-4819)



***Promeanea Meadow Gold***

## **Class IX – Miscellaneous**

### **Blue – *Promeanea Meadow Gold* – David Mellard/ Sal Marino**

The *Promeanea* species all come from Brazil where they grow in cool to warm, humid, montane forests. They like good drainage and plentiful watering and feeding while in active growth, with somewhat less for a few weeks when growths mature. Most important is that the humidity be constantly high, with good air movement to prevent fungal infection. All of the species are small growing plants, and *Prom. Meadow Gold* combines three of them to charming effect. Even though the flowers are less than two inches in size, and are borne only one or two per inflorescence, a well grown example can produce 25 to 30 inflorescences simultaneously from around the base of the plant.

### **Red – *Cerostylis rubra* – Maureen Pulignano**

### **White – *Lycaste brevispatha* – David Mellard/ Sal Marino**

### **White – *Chysis bruennowiana* – Randy Brazee**

## **AOS Corner**

Let's talk about FREE!

If you are looking for orchid information - try the American Orchid Society web site at [WWW.AOS.org](http://WWW.AOS.org). Much of the web site, including the forum, is open to everyone. There is a "Member's Only" section that has great information and we do want you to join the AOS and get our great magazine, *Orchids*, as well as access to that part of the web site, but if you aren't ready for that right now don't hesitate to visit the web site. At the web site under "Orchid Information" there is a place to sign up for a FREE Beginner's Newsletter. And there are also culture sheets. If you give an orchid as a gift it is nice to include a culture sheet with it. You can download those at no charge - FREE. Also your society can download them to give away at shows or at meetings.

The AOS web site lists upcoming shows which is great to check out when you are traveling. Wouldn't you hate to go to a city and find out you could have gone to an orchid show – if you had only known it was on? The web site also has all of the AOS Affiliated Societies listed along with when they meet and their contact information. Our society recently had a guest who was from New Jersey and visiting their mother in Delray Beach, FL. She went to 3 different orchid societies while in the area and had a great time. If you are an orchid grower you have instant friends all over the world. FREE! Under "Shop" you will find the "Orchid Source Directory" which lists vendors according to area. Now that might cost you something!

One event in particular you might want to plan a trip around are the AOS Members Meetings. The AOS Fall Meeting will be held at the Huntington Botanical Garden outside Los Angeles, CA along with the Southland Orchid Show. The dates are October 15 – 19, 2009. The Spring Meeting is in Oklahoma City, OK on April 28 – May 2, 2010. These meetings are orchid conferences with a lot going on, tours and lectures as well as the show. If you come to a meeting please join us at the Affiliated Society Breakfast. The registration is not FREE but the hotels are discounted for the meetings and the hosting clubs go to a lot of effort to hold the costs down while having a great event.

So there are some FREE things in the orchid world along with a lot of FUN.

Carol Holdren, AOS Affiliated Society Committee Chair

# Atlanta Judging Center Awards May 2009

*Photos courtesy of Maureen Pulignano and Bill White*

*All awards are provisional until published by the AOS*



Masdevallia Copper Angel 'Winding Road'  
AM/AOS

Masd triangularis x Masd veitchiana  
exhibited by The Orchid Gallery



Phragmipedium After-Glo 'Winding Road' AM/AOS  
Phrag Eric Young x Phrag Socerer's Apprentice  
exhibited by The Orchid Gallery



(unnamed cross)

Tolumnia Robson x Tolumnia Newberry Dancer  
'Pat Janvrin' HCC/AOS  
exhibited by David Janvrin



Phaleanopsis I-Hsin Lime 'Sherbert' AM/AOS  
Phal Talin Lime x Phal Taipei Gold  
exhibited by Stones River Orchids



# Atlanta Judging Center Awards June 2009

*Photos courtesy of Maureen Pulignano and Bill White*

*All awards are provisional until published by the AOS*



*Specklinia stremosa* CCM/AOS  
Cathy & Bill Meincer, Exhibitors

The Atlanta Judging Center meets and review plants on the second Saturday of every month in the basement at the Atlanta Botanical Gardens. Exhibitors and visitors are allowed to sit in the training sessions and to observe the judging. This is a great way to learn more about orchids and the entire judging process.

## Name Origins:

### **Phragmipedium -**

(Gr: fence; division; slipper) In allusion to the divisions of the trilocular ovary in the "slipper", which is the lip in this genus.

## EVENTS OUT AND ABOUT

**July 13-** AtLOS Meeting

**July 11 -** Atlanta Judging Center

**July 25 - Orchid Auction,** Orchid Auction at Roy Harrow's house open at 10, auction at 11, eat pot-luck at 1, should be over by 4. Bring friends, chairs, plants, folding cash and a little extra food. Drop off and park 7 houses back at the elementary school. Rain or shine. Make sure your name is on the bottom of the bowl and chairs. Wear appropriate clothing, if you pass out from the heat, you might wake up with only your head held above water. We have had people bid from the pool. You don't have to buy or sell a thing, but if you do, remember the 10% rule we use to avoid filing tax reports.

**2872 Gray Rd, Smyrna Ga 30081-1921**  
**H-770 434 8059 c-770 639 7052**

**Sept 18-20 - Alabama Orchid Society Show,** will be held in the Birmingham Botanical Gardens. For more information contact Sally Mickle, [orchidldy@bellsouth.net](mailto:orchidldy@bellsouth.net)

**Oct 10-11 - Gainesville Orchid Society Show,** Kanapaha Botanical Gardens, 4700 SW 58th Dr., Gainesville, FL. Contact: Joan MacLeod, 4411 NW 15th Pl., Gainesville, FL 32605; (352) 375-6744; [neilmacleod@bellsouth.net](mailto:neilmacleod@bellsouth.net).

**Oct 31 - Nov 1 - 50th Anniversary of the Mid-America Orchid Congress and Tenn. Capital Orchid Show.** Franklin Marriott Hotel, 700 Cool Springs Blvd., Franklin, TN. Contact: Steve Burger & Tom Harper, 9651 Fredonia Rd., Manchester, TN 37355. (931) 394-2713; [gandsgh@blomand.net](mailto:gandsgh@blomand.net).

**Jan 15-17- North Carolina Piedmont Orchid Society Show,** Daniel Stowe Botanical Garden, 6500 South New Hope Rd., Belmont, NC. Contact: Virginia Rappold, 10219 Rocky Ford Club Rd., Charlotte, NC 28269; (704) 912-2536; [vrappold@aol.com](mailto:vrappold@aol.com).

**Nov 14-23, 2011 - 20th World Orchid Conference,** Singapore. [www.20woc.com.sg](http://www.20woc.com.sg)

**Nov 2014 - 21st World Orchid Conference,** Pretoria, South Africa. Check the AOS website!

## THINGS YOU MIGHT HAVE MISSED IN MAY & JUNE



There were lots of questions for our June speakers about their innovative “cool pot” designs!



Even getting set up for a meeting is a social and fun time for orchid lovers! Come early or stay late to help clean up and chat with new friends.



The Raffle Man, Roy Harrow is still in business! Be sure to check out the monthly plant raffle. It is a great way to expand your collection at a low, low price. Have too many plants? Donate them to the Raffle! The money raised helps the AtLOS pay the bills and bring you the great speakers you hear every month!

And don't forget about the plant auction! When a member has a particularly nice plant to donate, it can be put up for silent auction. Sometimes a grower or speaker will donate plants to be auctioned. The money goes to the AtLOS. So, bring your donation or your checkbook so you don't miss out on these one of a kind items. Cheryl Bruce made sure to get her bid in!



### You Could Be Famous!

If you are an AOS member, you can submit material for publication in a new section called “Parting Shots”. It could be photos, poetry, articles or sightings of rare orchids. Articles should be under 700 words. Everything will be considered. This is **not** a contest, just anew monthly column for members.

Send your ideas or submissions to the editor, Jim Watson at [jwatson@aos.org](mailto:jwatson@aos.org). Acceptance or rejection of **all** submissions is at the discretion of the editor and Publications Committee.

# Forthcoming Name Changes

Ron McHatton  
AOS Director of Education

In 2000 the first DNA study of the Laeliinae was reported in Lindleyana. One of the results of that study was the realization that the Brazilian laelias did not belong with the Mexican group of species that included the type for that genus (*Laelia anceps*). The initial solution was to place them in *Sophranitis* although other authors proposed to split these species into several segregate genera. With the publication of Genera Orchidacearum Vol 4 in 2006 and the acceptance of the circumscriptions therein, a plethora of name changes took place in artificial hybrid names in this alliance. While many familiar names changed, the situation would have been significantly worse had this group of species been carved into a number of smaller genera.

Recent DNA studies with nine plastid regions plus the original ITS dataset have lead to a better understanding of this group. While this expanded *Sophranitis* is always supported, it is also imbedded among species traditionally recognized as *Cattleya* presenting the need to further alter the definitions of the genera that make up the alliance. There are effectively two solutions; creation of new genera for the various subgroups of *Cattleya* or lump all *Sophranitis* species with *Cattleya* and deal with these groupings as subgenera or sections of a greatly expanded *Cattleya*. This latter solution provides better nomenclatural stability for artificial hybrids of species in this alliance since changes would not result in transfers to new genera.

At the World Orchid Conference in January 2008, International Orchid Committee met to discuss the situation and, with input from the RHS Advisory Panel on Orchid Hybrid Registration (APOHR), the authors of the additional studies, the Orchid Hybrid Registrar (the Registrar), the AOS and editors of Genera Orchidacearum agreed that sinking *Sophranitis* into *Cattleya* would be a better approach over the long term.

Where are we? The first step in the process was the publication of a scientific paper transferring these species comprising the expanded *Sophranitis* into *Cattleya*. That was done in March of 2008 in Biodiversity. Those that don't appear in this paper are those that, at one time or another, were already transferred by other authors. *Sophranitis* (*Laelia*) *tenebrosa* is an

example. The second step, transfer of the natural hybrids has also now been done as well.

In a few months Genera Orchidacearum Vol. 5 will be published and will contain an addendum accepting these changes and the World Checklist of Monocotyledons will then be updated to reflect the changes. The Registrar has prepared the transfer of those species that appear in the hybrid registration database as well as the changes to intergeneric names that will result.

The cute little *Laelia liliputana* (aka *Hoffmannseggella*, *Sophranitis*) will soon be known as *Cattleya liliputana*.

While these changes will take some getting used to, this will stabilize hybrid names in the long run. The most visible of the ensuing name changes will be the sinking of the vast majority of *Laeliocattleya*, *Sophracattleya*, and *Sophrrolaeliocattleya* into *Cattleya*. This and the transfer of most of the existing *Brassocattleya*, *Brassolaelia*, *Brassolaeliocattleya* and *Rhynchosphrocattleya* hybrids to *Rhyncholaeliocattleya* (*Rhyncholaelia* x *Cattleya*) will involve some 75-80% or more of the hybrid name changes. There will be some *Laeliocattleya* that remain so along with some *Brassocattleya* and *Brassolaelia* that will remain unchanged or become *Brassocattleya*; those with one of the Mexican *Laelia* species like *L. anceps* or *L. autumnalis* or a true *Brassavola* like *B. nodosa* in the background respectively, but these will definitely be in the minority. An example of one of the former is Bc. Katherine H. Chatham (*B. nodosa* x *C. labiata*) which will remain unchanged and an example of the latter is Bl. Richard Mueller which will become Bc. Richard Mueller (*B. nodosa* x *C. flava*) It is our understanding that the Registrar expects the database to be updated by the end of March.

## Want to learn more?

Check out [www.aos.org](http://www.aos.org) for this and other articles on orchids. Consider joining the American Orchid Society today for even more benefits and access to member-only portions of their website.

For more information about this article, go to:  
<http://www.aos.org/AM/Template.cfm?Section=Home&TEMPLATE=/CM/ContentDisplay.cfm&CONTENTID=6230>