



# The Atlanta Orchid Society Bulletin

The Atlanta Orchid Society is affiliated with the American Orchid Society,  
The Orchid Digest Corporation and the Mid-America Orchid Congress.



Newsletter Editor: Margie Kersey

January 2009

[www.AtlantaOrchidSociety.org](http://www.AtlantaOrchidSociety.org)

Volume 50: Number 1

## JANUARY MEETING

**Topic: Terrestrial Orchids**

**Speaker: David Mellard**

**8:00 pm Monday, January 12**

**Atlanta Botanical Garden, Day Hall**

This month's speaker is a past president of the Atlanta Orchid Society, David Mellard. He is an experienced orchid grower with a deep interest in unusual plants and orchids including terrestri-



als. On a green growers tour of his property last year, one of the highlights was the front yard with a selection of bog plants. His greenhouse contained orchids that most of us will never attempt to grow. David and Sal not only grow these plants, they show and win awards with them. Last year Sal and David received numerous awards on 'Melo Spirit'.

Bring your questions and notepaper. You can be sure to learn a lot from our hometown presenter, David Mellard.

### Inside This Issue

#### Page

- 2..... AtlOS Officers  
Minutes of the December AtlOS Meeting
- 3 ..... Member's Spotlight
- 4 -9 .. Table Awards
- 10 ..... Show Notes!
- 11 .... December AOS Awards
- 11 .... What you missed in December

All material in the Atlanta Orchid Society Bulletin is copyrighted. The articles and photographs are the property of the authors or the Atlanta Orchid Society. Nothing contained herein may be reproduced without permission of the owners.

## A Catt by Any Other Name...

Name Changes in the Cattleya Alliance  
Coming Soon

(An email exchange between David Mellard  
and Ron McHatton, AOS Director of Education)

From: Mellard, David  
To: ronmchatton@aol.com  
Sent: Thu, 4 Dec 2008 9:01 am

I heard the other day that it's official that many of the cattleya alliance species, such as *Sophranitis* and the Brazilian laelias, have now been transferred to *Cattleya*, thus officially changing a lot of the names. True? I just checked the Kew monocot list and it still lists *Sophranitis purpurata* as the accepted name.

Can you add some insight to this and I'll write something up for the AtlOS newsletter.

David

Ron McHatton's Response on December 4, 2008

At the World Orchid Conference in January, Cassio Van den Berg presented a paper detailing the results of something like 9 phylogenetic studies of the Laeliinae completed since the first one in 2001 used to move the Brazilian laelias into *Sophranitis*. At that time, the position of *Cattleya maxima* was considered to be an error in the data and that subsequent studies would resolve it (it fell somewhere in the middle of *Sophranitis sensu lato*). You know what happens when you assume odd data are just errors. These subsequent studies all put *C. maxima* somewhere near the same place - in the expanded *Sophranitis*.

It's not an error. This created two choices, sink everything into *Cattleya* or break

*Continued on page 3*

**THE ATLANTA ORCHID  
SOCIETY**

**Officers**

*President - Jeff Whitfield*  
770-634-6153  
[jeffers@theAtlantaOrchidCo.com](mailto:jeffers@theAtlantaOrchidCo.com)

*Vice-President/Programs -*  
**Fred Missbach**  
[fredmissbach@aol.com](mailto:fredmissbach@aol.com)

*Secretary - David Glass*  
404-377-4187  
[Newtonglass@aol.com](mailto:Newtonglass@aol.com)

*Treasurer - Reba Herzfeld*  
4798 Summerset Lane  
Dunwoody, GA 30338  
770-394-3731  
[rebareneck@aol.com](mailto:rebareneck@aol.com)

*Immediate Past President -*  
**Jeff Whitfield**

**Directors**

**Bob Grzesik** (2009)  
404-873-0699  
[curmax@msn.com](mailto:curmax@msn.com)

**James Van Horne** (2009)  
[Jvanhorne@windstream.net](mailto:Jvanhorne@windstream.net)

**Terry Glover** (2010)  
404-248-3951  
[Adreidese@msn.com](mailto:Adreidese@msn.com)

**Roy Harrow** (2010)  
770-434-8059  
[Roy.Harrow@asurant.com](mailto:Roy.Harrow@asurant.com)

**Geni Smith** (2011)  
678-817-1915  
[Geni.smith@yahoo.com](mailto:Geni.smith@yahoo.com)

**Maureen Pulignano** (2011)  
404-869-6980  
[Maureen@deefalt.com](mailto:Maureen@deefalt.com)

**Other Volunteers**

*Greengrowers*

*Webmaster*  
**John O'Connell**  
[joconnel@bellsouth.net](mailto:joconnel@bellsouth.net)

*Librarian - James Van Horne*  
*Show Chair - Roy Harrow*  
[Roy.Harrow@asurant.com](mailto:Roy.Harrow@asurant.com)

*Hospitality - Geni Smith*  
*MAOC Rep - Doug Hartong*  
[catmando@mindspring.com](mailto:catmando@mindspring.com)

*AOS Rep -*  
*Society Auction Chair / Orchid Digest Rep - Fred Missbach*  
[fredmissbach@aol.com](mailto:fredmissbach@aol.com)

*Newsletter - Margie Kersey*  
[Margie@callkbs.com](mailto:Margie@callkbs.com)

**Atlanta Orchid Society Meeting Minutes  
December 9th, 2008**

The Atlanta Orchid Society Meeting was brought to order by President Jeff Whitfield.

The November meeting minutes were approved as published in the newsletter.

Roy Harrow reported on the upcoming Southeastern Flower Show Jan. 28<sup>th</sup> to Feb 1<sup>st</sup> at the Galleria. Members were reminded that anyone who enters a plant gets free admission to the show. Volunteers at the show are given free admission as well. See Roy Harrow or David Mellard to volunteer.

Thanks were given to Orchid Breeze, who supplied music for the Christmas party.

David Mellard was congratulated on becoming an AOS judge.

Due to conflicts with the Atlanta Botanical Society's schedule, the May meeting date may have to be changed to the first Monday of the month in 2009. An announcement will be made at a later date.

The treasurer reported that the Society's current balance is \$9349.48. A \$20,000 CD will soon mature and provide \$332.10 in interest.

Members were reminded that 2009 dues are due before January 1st.

New officers were installed for 2009: President - Jeff Whitfield; Vice-President - Fred Missbach; Treasurer - Reba Herzfeld; Secretary - David Glass; Trustees - Maurreen Pulignano and Geni Smith.

The meeting was adjourned, and the annual Christmas party followed.

Our thanks to the orchid judges: David Kessler, James Van Horne, and David Mellard.

Special thanks to Hoosier Orchids, who donated plants for an auction that netted over \$100 to the society.

Respectfully submitted,  
Carl Quattlebaum

**Join the Atlanta Orchid Society**

Membership in the Atlanta Orchid Society is \$30 for individuals or \$45 for households. Yearly membership runs January 1-December 31. Anyone joining in the third quarter will get a 50% discount on the current year's membership. Anyone joining in the fourth quarter will purchase a membership for the following year. You can join at one of our monthly meetings, or contact the society's Treasurer (see page 2) for a membership application.

For directions to the Atlanta Botanical Garden, please visit their web site at [www.atlantabotanicalgarden.org](http://www.atlantabotanicalgarden.org) or contact one of our society's officers listed on page 2.



## Member Spotlight

# Terry Glover



I became a member of the "Atlanta Orchid Society" in June of 1997. I got into orchids after Bob Grzesik and I met back in 1997 and he introduced me to growing orchids.. He also got me to join the society with him and I have been a member from that time up until now.

I am a native of Atlanta and was a nurse at Georgia Baptist hospital. I trained at Grady hospital working with patients. I got tired of doing nursing and after leaving Georgia Baptist, I went to work for Marriott Corp, working in the bar at the hotel. After that I started working with computers in 1996 and now I build computers and program them. I have never as of to date had a computer I created fail on me. I have to say I am good at what I do. I also in my spare time collect coins as a hobby, and orchids of course. Currently I serve as a director for the Atlanta Orchid Society

*"Catt" continued from page 1*

the genus *Cattleya* into something like 6 pieces and you can imagine the number of name changes there. The International Orchid Committee met at the WOC [in Miami] to discuss the situation and agreed that sinking *Sophranitis* into *Cattleya* would be a better approach. Present at that meeting were members of APOHR, Cassio, the Registrar of hybrids, etc.

For that to happen a number of things have to happen in sequence. The Monocot Checklist follows Genera Orchidacearum and likewise, the RHS hybrid registry does now as well. In addition, there's a formal 6 month delay in hybrid name changes following Genera Orchidacearum's publication. By the way, this is why all the *Doritaenopsis* haven't gone away - they will but not until Genera Orchidacearum Vol 6 is published. Anyway back to *Sophranitis*.

Where are we? The first step in the process was the publication of Cassio's paper transferring all of the expanded *Sophranitis* into *Cattleya*. That's been done and it's all of them not just some. The ones that don't appear in Cassio's paper are those that, at one time or another, were already transferred there like *Sophranitis* (*Laelia*) *lobata* since this species was originally described by Lindley in 1843 as a *Cattleya* and it isn't necessary to recreate that combination and there are several others. The second step is to transfer all the natural hybrids and to go back and correct any problems with priority that weren't fixed in the first paper. My understanding is the second paper is either done or nearly so.

At the meeting of APOHR in November, we discussed changing hybrid names before Genera Orchidacearum Vol 5 publishes in April or May. It's unclear to me if that's going to happen or if it will wait until then. One way or the other, after volume 5 publishes with an addendum accepting the changes, all the changes will be made. The Monocot Checklist will then reflect Genera Orchidacearum Vol 5 and the hybrid names will change. At the same time or shortly thereafter, by the way, all the changes in the *Oncidiinae* will occur as well - no more *Odontoglossum*.

In some ways it's unfortunate that it takes this long but at least there's a logical progression.

Ron McHatton

# Table Awards

*Photos courtesy of Margie Kersey,  
Bill White and Danny Lentz  
Commentary courtesy of Mark Reinke*



*Sophronitis cernua*

## Class I – Cattleya Alliance (Split into Species and Hybrids)

### Species

#### **Blue- *Sophronitis cernua* – Gary Collier / Mark Reinke**

This charming, brightly colored miniature from Brazil is the easiest of the traditional *Sophronitis* species to grow, being much more tolerant of heat and preferring to become dry between each watering. While a

clay pot with large chunks of open media would work with this species, it does best on a natural wooden mount, where it can creep about at will, get plenty of air circulation and good bright light. It is widespread in south-eastern Brazil from sea level to mountains well inland and will thrive between 50 and 100 degrees Fahrenheit. The species name means ‘nodding’ in reference to the lax habit of the clusters of flowers. They emerge from developing new growths as a well formed group of buds, and begin to open before the leaf is fully expanded. Peak blooming is in fall, but scattered flowers are possible at almost any time of the year. When the right parent is selected with an eye towards overcoming the tendency for a lax inflorescence, some charming miniature hybrids can result. The very small seed pods of *S. cernua* do not contain large numbers of fertile embryos, but we have successfully remade *Sc. Yellow Warbler* (x *Sc. Love Fresh*) and a hybrid with *L. anceps* var. *alba* ‘Nana Compacta’ and both will be available as mounted seedlings in 2009.

#### **Red – *Cattleya percivaliana* var. *semi-alba* ‘Jewel’ – Gary Collier / Mark Reinke**

#### **White – *Leptotes pauloensis* – Gary Collier / Mark Reinke**

## EVENTS OUT AND ABOUT

**Jan 12** - AtlOS Meeting

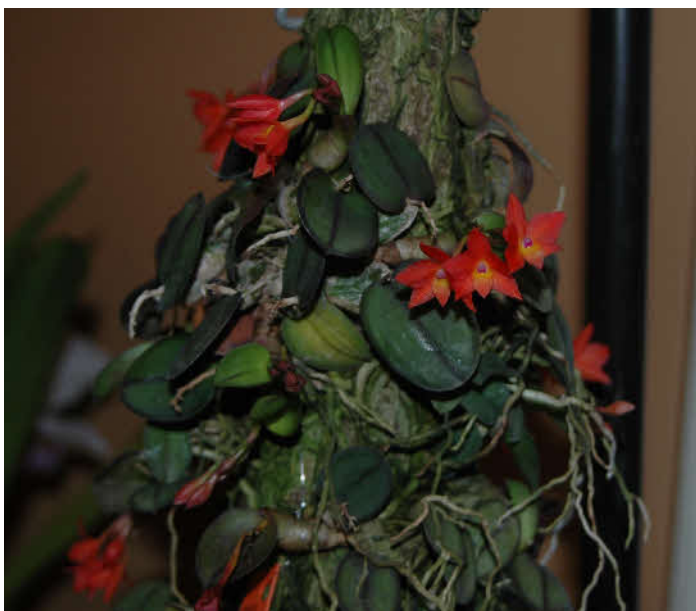
**Jan 10** - Atlanta Judging Center

**Jan 9-11 - North Carolina Piedmont Orchid Society Show**, Dael Stowe Botanical Garden, 6500 South New Hope Rd., Belmont, NC. 28269; (704) 912-2536; [vrappold@aol.com](mailto:vrappold@aol.com).

**Jan 28 - Feb 1 - Southeast Flower Show** to be held at the Cobb Galleria. See Roy Harrow or David Mellard for more information

**March 12 - 15- Atlanta Orchid Show** hosted by AtlOS and SMOS at ABG. See Roy Harrow to volunteer





**Brassanthe Maikai ‘Louise’ AM/AOS x  
Laelia anceps var. veitchiana ‘Ft. Caroline’ HCC/AOS**

mature and show their full potential before passing them off as unworthy. It is also good to remember that hybrids based on certain species, such as *Brassavola nodosa* and *Laelia anceps* are generally happier grown mounted or in baskets they are in pots where their peak potential may never be realized.

**Red – Brassanthe Maikai ‘Mayumi’ – Maureen Pulignano**

**White – Sophrocattleya Irene’s Song ‘Montclair’ HCC/AOS – Cora Ramborger**

**Class II – Cymbidium Alliance**

**Blue – Cymbidium [Mini Ken Pendulant] TRADE NAME? – Cora Ramborger**

No details could be discovered about this Cymbidium, which is either misidentified or marketed under an unregistered trade name. The exhibitor originally purchased it from a San Diego, CA nursery that appears to be out of business.

#### **JOIN THE AMERICAN ORCHID SOCIETY**

For \$60.00 per year, you reap the following benefits:

- 12 issues of *Orchids*, the Society’s monthly full color magazine chock full of insightful articles and tempting ads for plants and supplies.
- 10% off on purchases from the Society’s Bookstore and Orchid Emporium. Reduced or free admission to participating botanical gardens.

For a limited time, if you join for two years (\$108) you will also get a \$30 gift certificate (good on an order of \$100 or more) at any one of 13 commercial growers who advertise in *Orchids*. **JOIN TODAY.** For information, contact Evan Dessasau (404-241-4819)

## **Hybrids**

**Blue – Brassanthe Maikai ‘Louise’ AM/AOS x  
Laelia anceps var. veitchiana ‘Ft. Caroline’  
HCC/AOS – Gary Collier / Mark Reinke**

This is one of Gary Collier’s early hybridizing attempts which took time to show its true merits. Unfortunately, by then, we had sold most of the plants, and even discarded a group of them to make room for other things, deeming the cross ‘not that interesting!’ It wasn’t until we moved the handful of plants we kept from pots on onto mounts that they started to grow well and show their true potential. Grown this way, they are very vigorous and produce both new growths and blooms spikes off an on throughout the year. The ‘nodosa’ type blooms are sweetly fragrant during the day time and come in clusters of up to 5 or 6 on good sturdy stems. The lesson learned from this orchid is to give seedlings ample time to



**Cymbidium [Mini Ken Pendulant]**

### Class III – Dendrobium Alliance

#### Blue – *Dendrobium* Maiden Charlotte – Gary Collier/Mark Reinke

*Den.* Maiden Charlotte (*aberrans* x *rhodostictum*) is a great example of the line of New Guinea type hybrids that have become available in recent years. While the range of colors is somewhat limited, they are easier to grow in the home than *Phalaenopsis*! The species used in these crosses are all endemic to New Guinea and other smaller islands nearby, and grow in lower light and more even temperatures than most *Dendrobium* species. They tend to make clumping plants that like even moisture coupled with good drainage and respond well to being grown in plastic pots with an open medium. The fluted pseudobulbs produce several leaves near the apex and form inflorescences from side nodes in this same area. Bloom spikes are produced from mature canes repeatedly for many years, even after the leaves have fallen off, so that as the plant mass increases, so does the potential number of flowers. The plant exhibited has had at least a couple spikes of flowers on it at all times since we obtained it over 2 years ago, and tends to put on a big show in the cooler months. It won 'Best in Class' in the 2007 Atlanta Orchid Show.



*Dendrobium* Maiden Charlotte

#### Red – *Dendrobium* Chaisri Flare 'Hawaii' – David Glass



*Kirchara* Shirley Loreta Davidson

### Class IV - Epidendrum Alliance

#### Blue - *Kirchara* Shirley Loreta Davidson – Gary Collier/Mark Reinke

*Kirchara* Shirley Loreta Davidson pairs a miniature *Sophranitis* hybrid (*Sc.* Little Precious) with the intriguing reed stem *Epidendrum ilense*. The refreshing and charming results indicate that more hybrids like this should be attempted to bring greater interest and variety in modern miniature and compact hybrids. The combination of these genetics has produced a very compact plant with a shortened growth habit in the 'reed stem' fashion that bears clusters of cute flowers every few months with each new growth that develops. A hint of the amazing fringed lip of *Epi. ilense* comes through on these, with the flatter form

and brighter color palette of the other parent improving the overall presentation. And added bonus is that this hybrid will flower well in lower light than most typical 'mini catts' making it a better subject for culture under lights or in 'windowsill' conditions.

#### Red - *Prosthechea fragrans* – Doug Hartong

#### White – *Epidendrum* (*pseudepidendrum* x *floribundum*) x *C. Stono River* – Gary Collier/Mark Reinke



***Oncidium Gower Ramsey***

**Class V – Oncidium Alliance**

**Blue – *Oncidium Gower Ramsey* – David Glass**

This very attractive ‘Dancing Lady’ combines *Onc. sphacelatum*, *Onc. flexuosum*, and *Onc. varicosum* to very good effect with a particularly well arranged branched inflorescence. Though this cross was registered in 1977, it remains popular and has also been used as a reliable parent in hybridizing throughout the last two decades. The soft leaved *Oncidium* hybrids do well in pots under lights preferring a fresh, well draining medium that never goes totally dry.

**Red – *Odontocidium Black Beauty* – Roy Harrow**

**White – *Oncidium cheiroporum*- Barbara Dampog**



***Phragmipedium Grande***

**Class VI – Cypripedium Alliance**

**Blue – *Phragmipedium Grande* – Cora Ramborger**

Please see the notes in the August, 2008 newsletter for more details about *Phrag. Grande*.

**Red – *Paphiopedilum Lawless Zauberflöte* – David Glass**

**Welcome New Member!**

Harlan L. Morrison [Hal]  
3185 Wood Branch Drive  
Milton, Ga. 30004  
678-297-2705 day/evening  
[hlmorrison@bellsouth.net](mailto:hlmorrison@bellsouth.net)

**JOIN THE ORCHID DIGEST CORPORATION**

Don't let the name fool you, the Orchid Digest is a non-profit membership-based organization dedicated to orchids. Designed to appeal to the mid-range to advanced grower nothing beats the *Orchid Digest*. For just \$32 per year you get 4 issues of full-color, in-depth articles about orchids. The magazine is large format and the fourth issue of the year is always an extra-special issue devoted to a single genus.

***For membership application forms contact  
Fred Missbach (404-237-1694)***





*Doritis pulcherrima*

## Class VII – Phalaenopsis Alliance

**Blue – *Doritis pulcherrima* – Maureen Pulignano**

It may come as a surprise to some that *Doritis pulcherrima* grows as a terrestrial rather than an epiphyte in its widespread habitat from northeast India to Borneo and most points in between. Typically found in the bright shade of shrubby vegetation in sandy well-drained soil with accumulated organic matter, it grows the same as for *Phalaenopsis* except for the need for more light to flower well. Despite the small size of the flowers, good clones are a highly saturated shade of purple that passes along to its progeny, and this species can be found in the background of more than 6,000 modern *Doritenopsis* hybrids. The plant exhibited has exceptional form and size.

**Red – *Doritenopsis* I-Hsin Panda – Greg Smith**

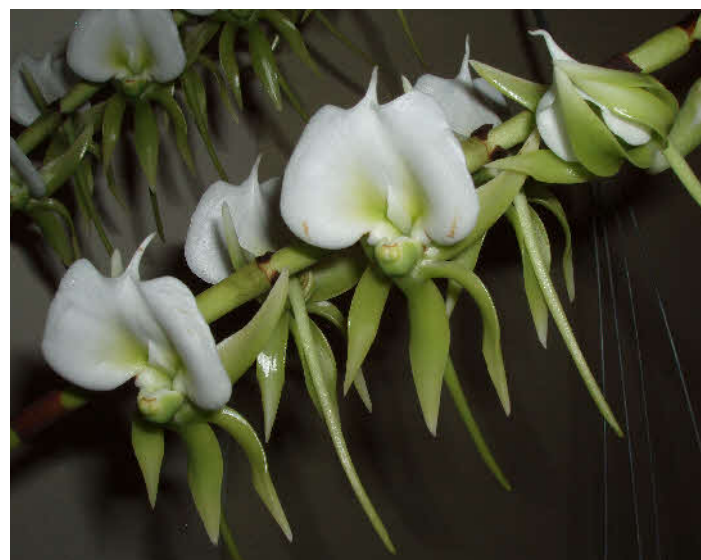
**White – *Doritenopsis* Sun Jye Diamond – Geni Smith**

## Class VII – Vanda Alliance

**Blue – *Angraecum superbum* – Maureen Pulignano**

For many years this imposing orchid was considered a variety of *Angcm. eburneum* but is now accepted as a separate species. It is endemic to both the Seychelle and the Mascarene islands in the Indian Ocean, where old plants form large dense clumps. The flowering season in cultivation runs from October to March, and well grown examples, such as this plant, can produce two or more flower spikes simultaneously. The non-resupinate flowers, though not the largest of the genus, are very attractively arranged in two ranks on a nearly horizontal inflorescence, carry the fragrance of Hyacinth, and are certainly worthy of the high praise the species name implies. Grow *Angcm. superbum* in a bright 'cattleya' light, with warmth and plenty of air

movement. A wooden basket is the best choice as this species needs heavy water and fertilizer in summer to induce blooming, but good drainage must also be maintained. Less water and feeding is required the balance of the year, but the plants should not completely dry out. All Angraecoids come from areas with constant high humidity and will not grow well if that type of atmosphere cannot be provided in cultivation.



*Angraecum superbum*

**Red – *Perrieraara* Motes Leprechaun 'Haiku Mint' – Doug Hartong**

Note the correct spelling of *Perrieraara* (named after R. Perriera) which is *Aerides* + *Rhyncostylis* + *Vanda*.





*Pleurothallis rowleei*



## Class IX – Miscellaneous

### Blue – *Pleurothallis rowleei* – David Mellard / Sal Marino

While *Pleurothallis rowleei* is considered one of the more adaptable species, the plant exhibited was an exceptionally well grown and flowered example and should have been considered for the J. C. Mobley Cultural Award. This species is fairly widespread in Costa Rica, Panama, Colombia and Ecuador at elevations that vary from 800 to 6,000 feet above sea level and is variable in color. This range makes it more tolerant of warm conditions than some other species. Grow it somewhat shaded in a moisture retentive media with good drainage, good humidity and good air-flow.

### Red – *Cynoches* William Clarke – David Glass

### White – *Maxillaria trinitensis* ‘Jasmine’ – Barbara Dampog

### White – *Stanhopea stevensonii* – Greg Smith

### ***Must downsize orchid greenhouse to move to apartment!***

Tree fern pots, logs, \$2 woodbaskets/rafts \$3 flasks, stoppers, \$10/box of a dozen+ many Oncidiums, Miltonias (several warmth-tolerant ones in bloom now), Brassias \$10-15 some overgrown Paphs (hundreds of them, mature) \$25 up Phrags - large nursery pots with over a dozen growths (some on bloom now) \$50 misc others (cymbidiums, Phaius, Gongoras, misc species) \$5 up Antique Orchid Album Fitch lithographs \$70 other orchid art also. Just inside 285 near 400.

**Linda Wish,  
404-252-5872**

**orchidwish@comcast.net**

### **Newsletter Submissions**

To submit material for the newsletter or to sign up for the email version of this newsletter, please contact Margie Kersey. The deadline for submission is the 20th of each month.

Margie@callkbs.com

Margie Kersey  
PO Box 464381  
Lawrenceville, GA 30042

# SHOW NOTES

*From Chairman, Roy Harrow*

**Southeast Flower Show**  
**January 28 - February 1, 2009**

***I WANT YOU!***



Hurry! There's not a lot of time left to get in on the action! If you want to volunteer at the show, let me know by the end of the January AtlOS meeting. Each time block is 2 hours and you get to enter the show for free! Parking is also free. Every year the AtlOS has a chance to introduce new people to orchids and to answer questions about growing orchids. This is a wonderful opportunity to invite new people to our Society and make new friends. And it is a lot of fun.

## **Important Dates:**

January 18 - Deadline for entering plants online  
January 26 - bring plants to Cobb Galleria  
January 27 - Judging  
January 28 - Show begins  
February 1 - Remove plants after 4:30 pm

Web site for entering plants is: [www.flowershow.org](http://www.flowershow.org)

Enter plants online if at all possible. The manual paperwork is long and detailed and it is a pain to complete when you are standing in a line with dozens of other folks who didn't register online. Remember, you can register your plant online and if it doesn't bloom, you can cancel. This is the easiest way to handle the registration.

See you there!

## **Dues are due!**

Be sure to mail in your dues today to:

Reba K. Herzfeld, Treasurer  
The Atlanta Orchid Society  
4798 Summerset Lane  
Dunwoody, Ga. 30338

**Single \$30    Family \$45**

**Atlanta Orchid Show**  
**March 12-15, 2009**

## **Vendor Update for the Atlanta Orchid Show**

- \_ Nature Glass Larry & Linda Mayes
- \_ Andy's orchids Andy and Harry Phillips
- \_ Atlanta Orchid Co. Jeff Whitfield & Bill W
- \_ Carolina Orchids Tom and Shann Nasser
- \_ Michel Orchid Nursery Erich Michel
- \_ Keiki Pro Greg Smith
- \_ Marble Branch Mark Reinke & Gary Collier
- \_ Orchid Inn Sam Tsui
- \_ Peach state Barbara Ellenburg & Sam
- \_ Paphanetics Dr. Hasegawa
- \_ Plates Cora Bell Ramborger
- \_ Canaima Orchids Michael Sinn

The following have not responded that they want to come:

Jewel Orchids  
Silk Synergy Julie Jennings  
Marriott decided not to due to a conflict.

## **Advertising**

Support the Atlanta Orchid Society while promoting your business by running your ad in our newsletter.

### **Advertising Rates**

1/8 page \$5 per month  
1/4 page \$10 per month  
1/2 page \$20 per month

Contact [Margie@callkbs.com](mailto:Margie@callkbs.com) for more information

*The size and number of ads may be limited at the discretion of the editor.*

# Atlanta Judging Center Awards December 2008

*Photos courtesy of Maureen Pulignano*

*All awards are provisional until published by the AOS*



**Above:**

**Blc Dal's Grace 'Peach Sorbet' AM/AOS  
Ron Cole, Exhibitor**



**Right:**

**Doritis pulcherrima HCC/AOS  
Maureen Pulignano, Exhibitor**

## Peruvian Orchid Dog Follow Up By Mikie Emerson



After reading what Margie wrote about the Peruvian Orchid Dog, Terry and I took off to Peru where we found these really butt ugly dogs. These dogs live in a small coastal town called Zarritto- just south of Tumbes. It looked like a "puppy-mill" to me and the poor dogs lived in pretty nasty conditions but the human dwellings weren't much better. This part of Peru is a desert with big windswept hills and cliffs. Absolutely no orchids for miles!

I prefer Ecuador over this part of Peru!

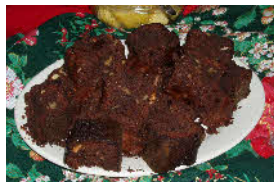




# THINGS YOU MIGHT HAVE MISSED IN DECEMBER



We had a ton of great food thanks to all of the members who brought dishes to pass!



As always, the gift exchange was a lot of fun! You just never know what you are going to get!



*Orchid Breeze* quintet - (l to r) Celeste Buckhalter, flute, Paul Thurner, obo, Robert Hicks, French horn, Steven Finn, bassoon and Michael Abraham, clarinet



2009 Officers are sworn in by Fred Missbach (left) - (l to r) James Van Horne, director, David Glass, secretary, Reba Herzfeld, treasurer, Jeff Whitfield, president, Geni Smith, director, Maureen Pulignano, director.



Orchid Art was everywhere! Including the back of Cora Ramborger's beautiful jacket.

