



The Atlanta Orchid Society Bulletin



Affiliated with the American Orchid Society, the Orchid Digest Corporation and the Mid-America Orchid Congress. 2001 Recipient of the American Orchid Society's Distinguished Affiliated Societies Service Award

Newsletter Editor: **Danny Lentz**

Volume 47: Number 2

www.atlantaorchidsociety.org

February 2006

FEBRUARY EVENTS

The Meeting:

**8:00 Monday, February 13 at Atlanta Botanical Garden
H.P. Norton – Phragmipedium besseae hybrids**

Our February speaker will be H.P. Norton from Moncks Corner, South Carolina. H.P. runs the OrchidView nursery with his wife Katherine. H.P. started out hybridizing Phalaenopsis in the seventies and got interested in Phragmipedium breeding about ten years ago. OrchidView has produced many fine crosses and they have received numerous AOS awards on both Phals and Phrags. The company web site can be found at <http://www.orchidview.com>.

Southeastern Flower Show : The show is approaching fast. Plants will be entered on Monday, February 6. If you are going to enter plants or volunteer for the show, please read the information on page 8.

DUES ARE DUE

Dues (\$30 single, \$45 household) for the calendar year 2006 are due. Your membership dues continue to bring you a monthly newsletter and underwrite the cost of speakers and programs presented throughout the year. Prompt payment helps us determine our budget for the year. Dues can be paid directly to Reba Herzfeld at the monthly meeting.



Masdevallia Exquisite Mary

Inside This Issue

Atlanta Orchid Society 2006 Officers.....	Page 2
Member Spotlight – Alfonso Doucette.....	Page 2
Events Out and About.....Dates for your Calendar.....	Page 3
Minutes of the January Meeting	Page 3
Recent Blooms at the Atlanta Botanical Garden.....	Page 4
The December Exhibition Table	Page 5
The Southeastern Flower Show.....	Page 8
Recent Awards from the Atlanta Judging Center.....	Page 9
Collector's Item : <i>Ornithocephalus</i> Hooker.....	Page 10

All contents © Atlanta Orchid Society unless otherwise noted.

THE ATLANTA ORCHID SOCIETY

Officers

President - Richard Hallberg
152 Sloan St.
Roswell, GA 30075
770-587-5827
rkhallberg@mindspring.com

Vice-President/Programs - Mark Reinke
155 Marble Branch Trail
Walhalla, SC 29691
864-718-0152
markreinke@direcway.com

Secretary - Sandy Phillips
870 Virginia Circle NE
Atlanta, GA 30306
404-874-1417
jerro@mindspring.com

Treasurer - Reba Herzfeld
4798 Summerset Lane
Dunwoody, GA 30338
770-394-3731
rebareneek@aol.com

Immediate Past President - David Mellard
770-270-5758
dmellard@cdc.gov

Directors (year term expires)

Sondra Nierenberg (2006)
770-579-3376
sondranier@aol.com

Fred Missbach (2006)
404-237-1694
fredmissbach@aol.com

Mikie Emerson (2007)
404-289-3684
knotmary@earthlink.net

Danny Lentz (2007)
770-640-0112
dblgongora@bellsouth.net

Barbara Dampog (2008)
770-923-5495
bdampog@aol.com

Rob Rinn (2008)
678-354-0443
RobertDRinn@aol.com

Other Volunteers

Newsletter Editor/Greengrowers
Danny Lentz

Webmaster

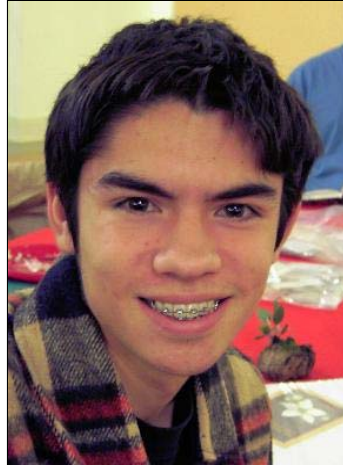
John O'Connell
joconnel@bellsouth.net

Librarians - Karen Chandler and Mikie Emerson

Show Chair - David Mellard

Hospitality - Terry Glover

Member Spotlight



Alfonso Doucette

University of Florida, Gainesville because they have an exceptional Ph.D. program for orchids under Norris Williams and Mark Whitten. My dream is to discover pleurothallids in the Andes and research the pollination habits of species in the genus Porroglossum. -Alfonso

Alfonso Doucette

Age: 16

Student, Mount Pisgah Christian School
Member since February 2005

I have had an infatuation with orchids since early childhood. My first love was Paphiopedilums but these days my interests are focused solely on pleurothallids. I currently have about 37 different species from the genera Porroglossum, Dracula, Masdevallia, Trisetella, Lepanthes, Lepanthopsis, Trichosalpinx, Restrepia, Pleurothallis, and Dryadella. I am a Junior in high school and plan on going to UGA and getting a degree in Botany and Entomology, my other passion. After UGA I will go to

Greengrowers

I haven't completely forgotten about Greengrowers. We will have several visits from March through June.

Future Greengrowers:

March 18 – Rob Rinn

April 22 – Mark Reinke and Gary Collier
I'm working on dates in May and/or June

-danny

Terry Glover has taken over the task of handling refreshments at the monthly meetings this year. Please contact Terry if you'd like to help.

Welcome to our new members:

Randy Towry – Doraville, GA

Grand Reopening of Our Remodeled Website

You are invited to see the newly remodeled Atlanta Orchid Society website at <http://www.atlantaorchidsociety.org>. Besides the new look, the website now includes an abbreviated table of contents for the past 20 newsletters and a few photos from last November's show. I would like to hear your views on the remodeling and ideas of what else you would like to see on the site. I would also welcome photos of:

- * Our November show.
- * Your growing space (greenhouse or windowsill)
- * Any current plants in bloom.

John OConnell joconnel@bellsouth.net

Events Out and About

February

Saturday, 2/4 International Phalaenopsis Alliance meeting at Peach State Orchids.

Monday, 2/6 Enter plants at Southeastern Flower Show. Judging will be on Tuesday.

Wednesday, 2/8-Sunday, 2/12 Southeastern Flower Show. If you entered plants then you need to pick them up Sunday evening.

Saturday, 2/11 Atlanta O.S. board meeting.

Saturday, 2/11 American Orchid Society monthly judging, Atlanta Judging Center, 2 pm, ABG basement workshop. If entering plants, please arrive before 1:30 pm to allow time for research and paperwork. Judges' training session will start at 1:00.

Monday, 2/13 Atlanta Orchid Society monthly meeting, ABG, Day Hall, 8 p.m. H.P. Norton will speak on Phragmipedium hybrids.

2/18 Paph Forum, Washington, D.C.

March

3/3-3/5 Miami International Orchid Show
<http://www.southfloridaorchidsociety.org/>

3/3-3/5 Savannah Orchid Show.

Saturday, 3/11 American Orchid Society monthly judging, Atlanta Judging Center, 2 pm, ABG basement workshop.

Monday, 3/13 Atlanta Orchid Society monthly meeting, ABG, Day Hall, 8 p.m. David Mellard will finish his talk on water quality and fertilizers.

3/16-3/18 Carter and Holmes Spring Open House and Sale.

Saturday, 3/18 Greengrowers: Rob Rinn

3/24-3/26 Heart of Dixie Orchid Society Show. Madison, AL. Contact Josie Asquith (256)881-2571 JLAsquith@bellsouth.net

3/31-4/2 Greater Pensacola Orchid Society Show, Pensacola, FL. Contact Mary Roberts, (850) 477-4935, MACR813@bellsouth.net

April

4/5-4/9 AOS Spring Meeting in Orlando, FL.

MINUTES OF THE JANUARY MEETING

The Atlanta Orchid Society Meeting was brought to order by President Richard Hallberg. The minutes from the last meeting were approved as written.

The Southeastern Flower Show will be held February 8-12. Enter plants by February 6. You can enter plants on line before this date, which would really help. The show will be held in the smaller hall on Northside Drive. Volunteers are needed to stand by the orchid area and answer questions. If you volunteer, you receive free entry for the day. The Exhibitors Guide and postcards to advertise to friends were available at the meeting. Questions: see or email Danny Lentz.

Incoming officers and trustees were introduced.

Please submit receipts for any expenses incurred during 2005 to Reba Herzfeld. Please submit Atlanta Orchid Society dues for 2006 to Reba.

There will be a Board Meeting in February. Get in touch with one of the officers or trustees with any items of importance to you to be discussed for the 2006 budget.

David Mellard spoke on water quality and the use of fertilizers. Results from water analysis in the City of Atlanta and Dekalb County were discussed. David will conclude the topic at the March 2006 meeting.

H.P. Norton will be speaking on Phragmipediums at the February meeting.

Our thanks to the orchid judges: Barbara Dampog, Mikie Emerson, Fred Missbach, Bill Smith, Helen Weil and Jeff Whitfield. Our thanks to those who donated plants to the raffle table: Marianne Gilmore (5), Fred Missbach, Helen Weil and others. Our thanks to those who provided refreshments: Michael and Carolyn Dufano, Reba Herzfeld, Geni Smith, Helen Weil and others.

The meeting was adjourned.

Respectfully submitted, Sandy Phillips

Please visit our web site at

<http://www.atlantaorchidsociety.org>

The Atlanta Orchid Society web site contains recent newsletters and articles, cultural information for growing orchids in Atlanta, as well as a calendar of events and information about our annual shows.

Recent Blooms at the Atlanta Botanical Garden, January 2006

Photos © Danny Lentz



Bulbophyllum falcatum (section
Megaclinium)



Bulbophyllum sp. (section
Megaclinium)



Vanilla imperialis



Bulbophyllum sulfureum

Join the Atlanta Orchid Society

Membership in the Atlanta Orchid Society is \$30 for individuals or \$45 for households. Yearly membership runs January 1-December 31. Anyone joining in the third quarter will get a 50% discount on the current year's membership. Anyone joining in the fourth quarter will purchase a membership for the following year. You can join at one of our monthly meetings, or contact the society's Treasurer (see page 2) for a membership application.

For directions to the Atlanta Botanical Garden, please visit their web site at www.atlantabotanicalgarden.org or contact one of our society's officers listed on page 2.

Newsletter Submissions

To submit material for the newsletter, or to sign up for the email version of the newsletter, please contact Danny Lentz. The deadline for submissions is the 20th of the previous month.

MAIL TO: Danny Lentz
1045 Wordsworth Dr.
Roswell, GA 30075

EMAIL: DBLGONGORA@BELLSOUTH.NET

Advertising

Advertising is now being accepted for our newsletter. The size and number of ads may be limited at the discretion of the editor. Advertising Rates per issue are: ¼ page \$10, ½ page \$20, full page \$40.



C. walkeriana fma. semi-alba 'Kenny'



C. Ruth Gee 'Mt. Everest'

**JANUARY 2006 EXHIBITION TABLE AWARDS
with notes by Mark Reinke**

CLASS 1: CATTLEYA ALLIANCE

(species)	Blue	<i>C. walkeriana fma. semi-alba 'Kenny'</i> , AM/AOS	Missbach
	Red	<i>Schomburgkia lueddemanii</i>	Collier/Reinke
	White	<i>Laelia anceps 'Williamsoniana'</i>	Collier/Reinke
(hybrid)	Blue	<i>C. Ruth Gee 'Mt. Everest'</i> , AM/AOS	Missbach
	Red	<i>Slc. Dream Catcher</i>	Collier/Reinke
	White	<i>Pot. Exotic Gold</i>	Brinton/Park

(Blue) *C. walkeriana fma. semi-alba 'Kenny'*, AM/AOS : This pristinely beautiful orchid was awarded 87 points by the American Orchid Society in 1989 when it received its Award of Merit, the highest score any example of this species has received to date. The judges commented on its full, round form and glistening texture. So extraordinary was it that its owners went to the trouble of obtaining a plant patent, something rarely done when orchids are concerned! But then, like so many exceptional awarded examples of Cattleya species, all seems just a little too perfect, and controversy over whether or not this plant is 'pure' *C. walkeriana* has continued to boil through the years. In support of this doubt would be several obvious observable differences between 'Kenny' and typical *C. walkeriana* flowers: all flower parts in a perfect plane; a much less pronounced 'isthmus' on the lip and more prominent side lobes ; flowers borne from the top of a pseudobulb in normal Cattleya fashion instead of arising directly from the rhizome on a leafless growth as is typical for *C. walkeriana*. (Our plant of 'Kenny' is currently producing an inflorescence in each of the two ways on its two different leads!) As Fred Missbach pointed out, some believe this plant is really Cattleya Snow Blind, registered in 1986, which would add a pinch of *C. loddigesii*, and a dash of *C. dolosa* to its background. Still others believe the differences are due to 'Kenny' being a polyploid form of *C. walkeriana*. For the hobbyist, it is enough to know that by growing

this plant exactly as you would the typical species, you will succeed in enjoying its very beautiful, fragrant and long lasting flowers for yourself!

(Blue) *C. Ruth Gee 'Mt. Everest'*, AM/AOS : The 'Mount Everest' clone of *C. Ruth Gee* was the last example of this hybrid to receive an AOS award, earning its 81 point Award of Merit in 1998. By then, near perfect examples of large pure white cattleyas had been wowing the judges for over half a century, and many believe nothing more can be done to improve this form any further. Much of this perfection is due to the fact that exceptional, often tetraploid, pure white forms of large flowered species were discovered in the wild early on, and quickly used as parents. One such plant, *C. speciosissima 'Snow Queen'* FCC/RHS, which was later changed to *C. mossiae 'Snow Queen'*, is a great-grandparent of *C. Ruth Gee*. Later genetic testing has shown this clone to actually be *C. Gravesiana*, a natural hybrid between *C. mossiae* and *C. lueddemanniana*. The main significance of this discovery is that *C. lueddemanniana* has played a much larger role in the genetics of perfect white Cattleyas than the registration records lead one to believe. Unfortunately, being large plants, and once-bloomers, fewer hobbyists are devoting space to these magnificent beauties. And so far, the goal of making smaller, perhaps more frequent blooming versions of them has been minimally successful.

CLASS 2: CYMBIDIUM

Blue	<i>Cymbidium</i> hybrid	Lentz/Morgan
Red	<i>Cymbidium</i> Leodogran 'Cradlemont', S/CSA	Frye



Cymbidium hybrid

*Dendrobium aberrans***CLASS 3: DENDROBIUM**

Blue	<i>Dendrobium aberrans</i>	Hallberg
Red	<i>Dendrobium Himezakura</i> 'Fujikko'	Glass
White	<i>Dendrobium Stephen Batchelor</i>	Rinn

(Blue) *Dendrobium aberrans* : *Dendrobium aberrans* is a miniature plant found in shady locations in the warm tropical forests of Papua New Guinea. The petite white flowers with a faint pinkish blush in the center are borne on small stems that originate from nodes near the ends of both new and old canes and can last in good condition for 6 to 9 months! It prefers to grow mounted with good humidity and ample water and fertilizer while in active growth. Recently, breeders have been successful at crossing this species with other members in the Latouria section of Dendrobiums, as well as those in the Phalaenopsis section, offering hope of some exciting miniature hybrids in the future.

CLASS 4: EPIDENDRUM

Blue	<i>Cattleya violacea x Encyclia alata</i>	Collier/Reinke
Red	<i>Epicattleya Siam Jade</i> 'Ontario', HCC/AOS	Collier/Reinke

(Blue) (*Cattleya violacea x Encyclia alata*) : This plant was one of several unusual and intriguing crosses purchased at the Redland International Orchid Festival from Plantio la Orquidea, a Venezuelan orchid nursery. This orchid event is unique for the number of Central and South American growers who attend, giving hobbyist collectors a chance to find plants otherwise not available in the U.S. In addition to some offbeat primary hybrids such as this ribbon winner, Plantio la Orquidea offered rare and unusual color forms of their native species such as *C. lueddemanniana*, *C. mossiae*, and *C. percivaliana*. The range of vendors in attendance insures that many other rare and unusual genera and species are available as well. Redlands will be held this May 19 -21 at an outdoor venue, the Fruit & Spice Park, in Homestead, FL. By the way, if by chance this cross is ever registered, it would be under the man-made genus Catyelia, introduced in 2004 to distinguish hybrids between Cattleya and Encyclia from those made with true Epidendrums, which are still registered as Epicattleya.

*C. violacea x Enc. alata***CLASS 5: ONCIDIUM ALLIANCE**

Blue	<i>Brassada Orange Delight</i> 'Starbek Orange', HCC/AOS	Dufano
Red	<i>Oncidium ornithorhynchum</i>	Rinn
White	<i>Maclellanara Pagan Lovesong</i> 'Chocolate Thunder', HCC/AOS	Rinn

(White) *Maclellanara Pagan Lovesong* 'Chocolate Thunder', HCC/AOS : Maclellanara combines Oncidium, Odontoglossum and Brassia, and this hybrid was introduced by the Rod McLellan Co. in 1978. Being the first to register this combination of genera, they choose the name for the man-made genus that all future crosses using the same combination would bear. Yet it is curious that the spelling is slightly different from the surname of the company founder! Whatever the reason for that, this was a very successful hybrid. It has captured 50 flower quality awards from the American Orchid Society, including a notable *four* First Class Certificates, as well as two Certificates of Cultural Merit! Although used extensively as a parent in additional hybrids, none have ever come close to receiving similar accolades from the judges.

*Brassada Orange Delight* 'Starbek Orange'

The Monocot Checklist from Kew, which is a very useful reference for looking up the names of orchid species, has a new web address:

<http://www.kew.org/wcsp/home.do>

JOIN THE ORCHID DIGEST CORPORATION

Don't let the name fool you, the Orchid Digest is a non-profit membership-based organization dedicated to orchids. Designed to appeal to the mid-range to advanced grower nothing beats the *Orchid Digest*. For just \$32/year you get 4 issues of full-color, in-depth articles about orchids. The magazine is large format and the fourth issue of the year is always an extra-special issue devoted to a single genus. For membership application forms contact Fred Missbach (404-237-1694)



Phrag. Eric Young 'Puffin'

in less than two decades, Phragmipediums went from being somewhat obscure 'connoisseur' plants to a popular and important part of modern collections. The very recent discovery of *Phrag. kovachii*, yet another brilliant species which also possesses flowers of astounding size, assures that this orchid group will only become more popular in the future!

CLASS 6: CYPRIPEDIUM ALLIANCE

Blue	<i>Phragmipedium</i> Eric Young 'Puffin', HCC/AOS	Brinton/Park
Red	<i>Paphiopedilum haynaldianum fma. album</i>	Rinn
White	<i>Paphiopedilum</i> Norito Hasegawa	Brinton/Park

(Blue) **Phrag. Eric Young 'Puffin'** : Phrag. Eric Young was one of the first hybrids made from the newly discovered *Phrag. bessae*, a brilliant, if somewhat diminutive, Ecuadorian species that took the orchid world by storm when found in 1981. Its red pigments tend to dominate in its progeny, and therefore when crossed with other duller, but more robust species (such as *Phrag. longifolium* in this case), large, impressive, red, salmon and peach flowers can be produced. As a consequence,

CLASS 7: PHALAEENOPSIS ALLIANCE

Blue	<i>Dtps.</i> Tzu Chiang Prince 'C#16'	Grzesik
Red	<i>Phal.</i> Penang Girl 'Ching Ruey'	Grzesik
White	<i>Phal. equestris</i> collection	Lentz/Morgan

(Blue) **Dtps. Tzu Chiang Prince 'C#16'** : Our blue ribbon winner in the Phalaenopsis Alliance this month illustrates the rapid pace at which hybridization has proceeded within this group, being the product of 12 generations of breeding utilizing 15 species along the way! As with many modern Doritaenopsis, the actual species *Doritis pulcherrima* is a mere blip in its family tree, appearing only once and 10 generations removed from present hybrid. The "C#16" probably stands for "Clone Number 16," as the Taiwanese breeder that produced this hybrid seems too occupied with producing new hybrids to give them traditional clonal names! It clearly shows the influence of both *Phal. violacea* and *Phal. amboinensis*, which appear several times each in the third and fourth generations of its ancestry. With this parentage, each spike should continue to produce successive flowers, a few at a time, for several years.



Dtps. Tzu Chiang Prince 'C#16'



Masdevallia mejiana

CLASS 8: VANDACEOUS ALLIANCE

Blue	<i>Amesiella monticola</i>	Lentz/Morgan
Red	<i>Rhynchostylis gigantea</i>	Hansen
White	<i>Darwinara Charm</i> x <i>Vanda amesiana</i>	Grzesik

(Blue) **Amesiella monticola** : *Amesiella monticola* was described in 1999 as the second known species of this genus, named for botanist Oakes Ames. Growing wild at elevations of six to seven thousand feet on the island of Luzon in the Philippines, it is a charming, fragrant, miniature member of the Vandaceous Alliance that does best grown mounted, shady, and with good humidity.

CLASS 9: MISCELLANEOUS GENERA

Blue	<i>Masdevallia mejiana</i>	Lentz/Morgan
Red	<i>Lycaste macrobulbon</i>	Missbach
White	<i>Bulbophyllum phalaenopsis</i>	Hallberg

(Blue) **Masdevallia mejiana** : Pronounce this species "May-hee-ah'-na" since it was named for Don Alvaro Mejia, a Colombian orchid grower who originally found it. There are more than 500 species of *Masdevallia* scattered from Southern Mexico to Southern Brazil, with the highest concentration hailing from elevations of 8,000 to 13,000 feet in the Andes of Colombia, Ecuador, Peru, and Bolivia. This particular species, however, grows at warmer elevations of about 2500 -3000 feet on the western slopes in Colombia, and therefore is more adaptable to the home environment, as attested by the beautifully grown example that captured a blue ribbon this month. As a rule, *Masdevallias* prefer low to moderate light, high humidity, and regular watering, with good air movement and drainage so that they do not stay so wet as to be subject to fungal attack.



Masdevallia mejiana

2006 Southeastern Flower Show February 8-12

As many of you know, the Southeastern Flower Show has a special exhibit for orchids with most of the entries coming from the Atlanta Orchid Society and the South Metro Orchid Society. **People who enter orchids in the Horticulture Division get a non-transferable single-day free admission to the show.** Plants will be entered on Monday, February 6. Please read the information below if you plan to enter plants or are volunteering at the show. The web site for the Show is www.flowershow.org. For more information contact Danny Lentz (dblgongora@bellsouth.net, 770-640-0112).

Please pre-enter your plants. If you pre-enter your plants it will help speed things up tremendously on Feb. 6 when you bring your plants to the show. To start the pre-entry process you don't need to know the exact plants you will be bringing yet. By Friday, February 3 go to the flower show web site and create entries for the approximate number of plants you will be bringing. Once you have created the entries, you will still be able to edit them until at least early Saturday morning. It would be very helpful if you could go through your plants by Saturday morning and decide which ones you will actually bring, then get those entries updated on the web site. I may try to print out some of the show cards on Sunday if I get a reasonable number of entries by then. **If you enter your plants on the web site, you can print two copies of the summary page for each entry instead of writing out the two index cards!**

DELIVERY AND ENTRY OF PLANTS- The show will be in Hall C at the Georgia World Congress Center, the same place as in 2004. Directions can be found in the Exhibitor's Guide. After you unload your plants you will need to go park in a pay lot before finishing the registration process. There are several lots around GWCC on Northside Drive. You may wish to car pool to reduce parking costs, or arrange for someone else that is going to deliver your plants. You can also take MARTA to the station for Phillips Arena, GWCC and the Georgia Dome.

If you did not pre-enter your plants on the web site and print out your entry summaries, then you will need to fill out two 4" x 6" cards for each plant entered. See the Southeastern Flower Show Exhibitor's Guide (p. 22) for specific information to be included on these cards and for an example of a completed card. You can also fill out another card with cultural instructions if you want to.

VOLUNTEERS- If you have signed up to volunteer for the show, you will need to report to the volunteer office in Hall C room 104 when you get to GWCC. The volunteer office will give you your wristband to get onto the show floor. Volunteers are given free entry to the show but not free parking. If you prefer not to drive you can take MARTA to the station for Phillips Arena, GWCC and the Georgia Dome.

Schedule of Events:

Monday, February 6: **Plant entry and display set up** for the Southeastern Flower Show. Plant registration is from 4:00 PM to 8:00 PM, at the Georgia World Congress Center, Hall C.

Tuesday, February 7: AOS and ribbon judging of orchids entered in the Southeastern Flower Show. The exhibitor does not need to fill out an AOS judging slip but does need to indicate if they do not want the plant to be considered for AOS judging.

Wednesday, February 8: **Southeastern Flower Show opens to the public.** Hours are 10-8 Wed-Sat, 10-6 Sun. If you enter orchids in the Horticulture Division or volunteer, you will receive a one-time free admission to the show. General admission to the show is \$18 for adults and \$6 for children 5 to 15. Advance tickets to the show are \$15.

Sunday, February 12: Southeastern Flower Show closes at 6 PM. **Plant removal** takes place from 6:30 PM to 7:30 PM. You must pick up your own plants or have made arrangements for someone to pick them up.

RECENT ACTIVITIES OF THE ATLANTA JUDGING CENTER

The following awards were granted at the December session of the AOS Atlanta Judging Center. They are provisional awards pending official publication in the *Awards Quarterly*. Certificates of Horticultural Merit and Certificates of Botanical Recognition are also provisional pending identification by an AOS certified taxonomist prior to publication of the award.



Cattleya Jentri 'Panther Creek'

AM 81 pts (trianae x jenmanii)

Natural Spread: 15.1cm H x 14.0cm V

Two large flowers well-presented on one inflorescence; sepals and petals rich lavender with slightly darker flares at tips; lip ruffled, midlobe intense red-purple with lavender picotee, throat buttercup yellow distally, white with lavender veins proximally; column and anther cap white; substance moderate; texture sparkling.

Exhibitor: Barney & Aileen Garrison

JOIN THE AMERICAN ORCHID SOCIETY

For \$60.00/year, you reap the following benefits:

- 12 issues of *Orchids*, the Society's monthly full color magazine chock full of insightful articles and tempting ads for plants and supplies.
- 10% off on purchases from the Society's Bookstore and Orchid Emporium. Reduced or free admission to participating botanical gardens.

For a limited time, if you join for two years (\$108) you will also get a \$30 gift certificate (good on an order of \$100 or more) at any one of 13 commercial growers who advertise in *Orchids*. **JOIN TODAY**. For information, contact Evan Dessasau (404-241-4819)



Epilaeliocattleya Pixford 'A.O.C.'

HCC 78 pts (Lc. Pixie x Epi. stamfordianum)

Natural Spread: 3.8cm H x 4.5cm V

Twenty-six flowers and 11 buds well-presented on three inflorescences; flowers mimosa yellow; sepals stippled blood red; petals splotched blood red centrally; lip distinctly spotted blood red; column citron, anther cap tipped deep oxblood; substance firm; texture matte.

Exhibitor: Atlanta Orchid Company

IPA Program

Saturday, February 4, 2006
at **Peach State Orchids, Inc.**

920 Homer Road
Woodstock, GA 30188
(770) 751 8770

(See <http://www.peachstateorchids.com> for driving directions. Check the Contact section.)

9 a.m. : Greenhouses open – plant sales and hospitality

10 a.m. : Welcome and Information on Day's Activities including raffle ticket sales for the IPA Color Fund (Please bring selected plants for donation.)

10:15 a.m. : Bill Ellenberg of Peach State Orchids will speak on the influence of *Phalaenopsis violacea* (bellina) in hybridizing.

11:30 a.m. to 1 p.m. : Lunch break on your own

1 p.m. : Workshop on *Phalaenopsis* Culture - Bill Ellenberg and Tom Harper (and others) will provide information on *Phalaenopsis* culture including general care, fertilizing, potting media, pesticide use and any other cultural matters of interest to the audience.

2:30 p.m. : Raffle and end of meeting

Collector's Item : *Ornithocephalus* Hooker

Tribe: Maxillarieae

Subtribe: Ornithocephalinae

Etymology: From the Greek ornis (bird) and kephale (head), referring to the shape of the column.

Type species: *O. gladiatus*

Ornithocephalus is a genus of about 50 species from the tropical Americas. They grow from sea level to 1000 meters in wet forests or areas where they get fogs at night. These miniature plants have fleshy leaves arranged in a fan shape and do not possess pseudobulbs. The mature plants are only 3" to 8" across depending on the species. They often flower on multiple inflorescences which each contain many small white or green flowers. The flowers are pollinated by bees of the genus *Paratetrapedia* which collect oils produced by the flowers.

Culture: These plants are fairly easy to grow in semi-shady, humid, warm to intermediate conditions. They grow well on mounts, and can also be placed in small pots if they are given excellent drainage. [I'm currently keeping three species alive so they can't be all that hard to grow, although I haven't flowered them very well. I probably need to give them a little more moisture. -danny]

Photos © Danny Lentz



Grown by Atlanta Botanical Garden

O. polyodon is found in Ecuador, Peru, and Northern Brazil



Grown by Lentz/Morgan

O. manabina is found in Ecuador



Grown by Atlanta Botanical Garden

Ornithocephalus species



Grown by J&L Orchids



Grown by J&L Orchids

O. inflexus is found from Mexico and Honduras to Panama



Grown by Lentz/Morgan

O. dolobratus is found from Colombia to Peru



Grown by Atlanta Botanical Garden

Ornithocephalus species



Maxillaria perryae